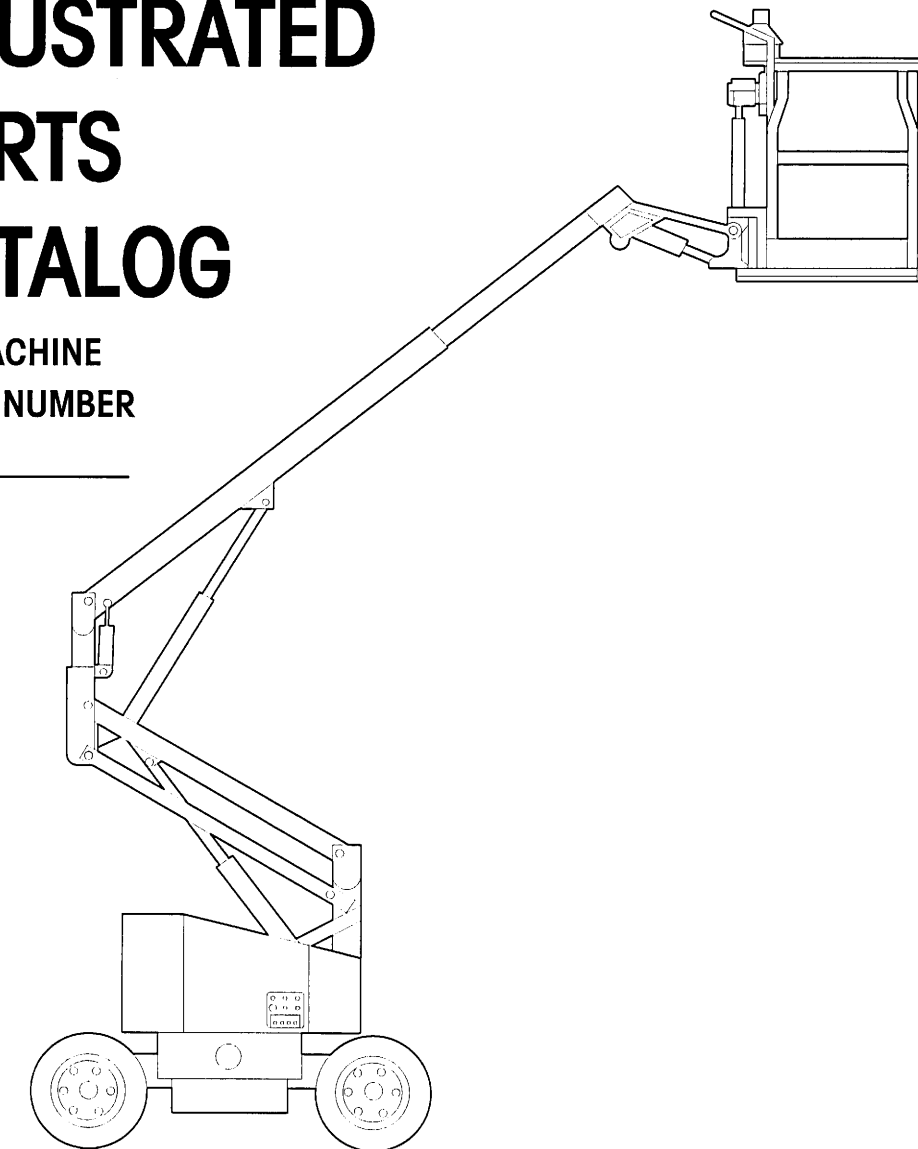


SILVER EAGLE
32/21 ELECTRIC

S/N V 3715 and up

ILLUSTRATED
PARTS
CATALOG

FOR MACHINE
SERIAL NUMBER



Art # A00.00422E

Part No. 89-411715 • Revision A.7 dated Jan. 1996 •

TABLE OF CONTENTS

INTRODUCTION

PRIMARY MACHINE COMPONENT GROUPS

SECTION 1: UNDERCARRIAGE

1.10: UNDERCARRIAGE

SECTION 2: SUPERSTRUCTURE

2.11: SUPERSTRUCTURE - HYDRAULIC COMPARTMENT

2.12: SUPERSTRUCTURE - ELECTRICAL COMPARTMENT

SECTION 3: BOOM

3.07: UPPER BOOM ASSEMBLY

3.08: LOWER BOOM ASSEMBLY

SECTION 4: PLATFORM

4.07: PLATFORM ASSEMBLY

SECTION 6: VALVE BANK

6.08: GROUND/ PLATFORM VALVE BANK ASSEMBLY

SECTION 7: GROUND CONTROL BOX

7.14: GROUND CONTROL BOX

SECTION 9: PLATFORM CONTROL CONSOLE

9.12: PLATFORM CONTROL CONSOLE

SECTION 18: WHEEL BRAKE

18.06: REAR DRUM BRAKE ASSEMBLY

SECTION 19: AXLE

19.01: AXLE AND BRAKE ASSEMBLY

SECTION 20: DRIVE SHAFT

20.03: DRIVE SHAFT

SECTION 21: PLATFORM ROTATOR

21.01: PLATFORM ROTATOR (40:1 SPEED REDUCER)

21.03: HYDRAULIC ROTATOR

21.04: HYDRAULIC ACTUATOR ASSEMBLY

TABLE OF CONTENTS CONTINUED

SECTION 23: MANIFOLD

23.05: VALVE BLOCK

SECTION 29: CONTROLLER

29.02: DRIVE CONTROLLER ASSEMBLY (JOYSTICK)

29.07: JOYSTICK - DRIVE CONTROLLER

SECTION 99: DECALS

99.02: DECALS

INTRODUCTION

This Illustrated Parts Catalog is designed to help you identify and order the correct replacement parts for use on SIMON MODEL 32/21 ELECTRIC POWERED SILVER-EAGLE SELF-PROPELLED AERIAL WORK PLATFORMS. All parts represented here are manufactured and supplied in accordance with Simon Aerials quality standards. We recommend that you use GENUINE SIMON AERIALS PARTS to insure maximum SAFETY and PERFORMANCE.

Prices for all parts listed in this Catalog can be found in a separate Spare Parts Price List. Please contact Simon Aerials Parts Department for the latest edition of the Spare Parts Price List.

HOW TO USE THIS CATALOG

The Cover Page indicates the specific model or models covered by this Parts Catalog.

The "Table of Contents" pages list the specific sections, pages and page titles that are relevant to this model, and contained in this Catalog. Only those pages that refer specifically to the MODEL 32/21 ELECTRIC POWERED SILVER-EAGLE are included in this Catalog.

The "Primary Machine Component Groups" page illustrates the four major assemblies, along with their "Section" number.

The Parts Catalog is divided into "Sections", numbered from 1 through 99. Each section contains the individual parts that make up a major component, assembly or item. The first four sections (1 through 4) contain the major assemblies, or "Primary Machine Component Groups". Sections that follow contain sub-assemblies or components of these "major" assemblies.

If a part number is followed by a plate number in the "SEC." column, refer to the plate indicated for a further breakdown of components for that part number.

When selecting parts for a specific machine, be sure to verify the machine model number, and serial number or date code (found on the data plate). When ordering parts, always give:

1. Model and Serial Number
2. Item Part Number and Description
3. Order Quantity

If a part number is not listed for a selected item, please provide this additional information:

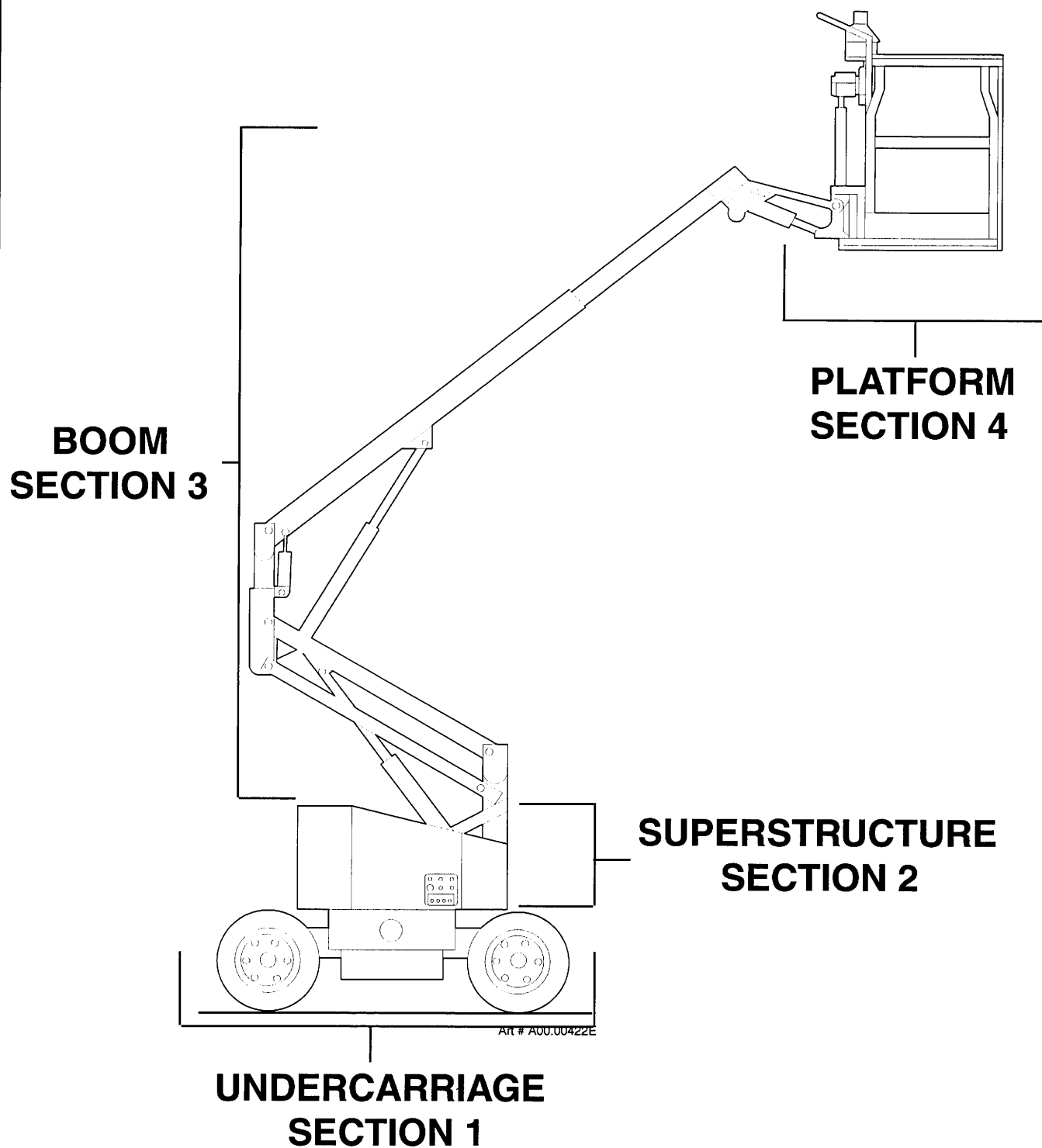
4. Parts Plate number, Item Number and Description of the desired item, OR
5. Part Number of the next assembly (Parent Part), if the desired item is not listed.

Some assembled items, such as hydraulic cylinders, may have been supplied by more than one source. While the assemblies may be able to be used interchangeably, FOR SAFETY'S SAKE, do not mix components or repair kits. Please confirm the make of the assembly on the unit before ordering or installing replacement parts.

Left and right-hand, front and rear should be determined as though you are standing at the Platform Control Console, with the Platform in stowed position (over the non-steering axle). All dimensions are in inches unless otherwise specified.

SIMON AERIALS INC. reserves the right to change, improve, modify or expand features of its equipment. Therefore, specifications, models or equipment are subject to change without notice, and without incurring obligations.

All SIMON AERIALS INC. manuals are periodically updated to reflect changes that occur in the equipment. Please contact Simon Aerials Technical Support Department for information regarding changes which may affect your machine, or for the latest edition of this catalog.

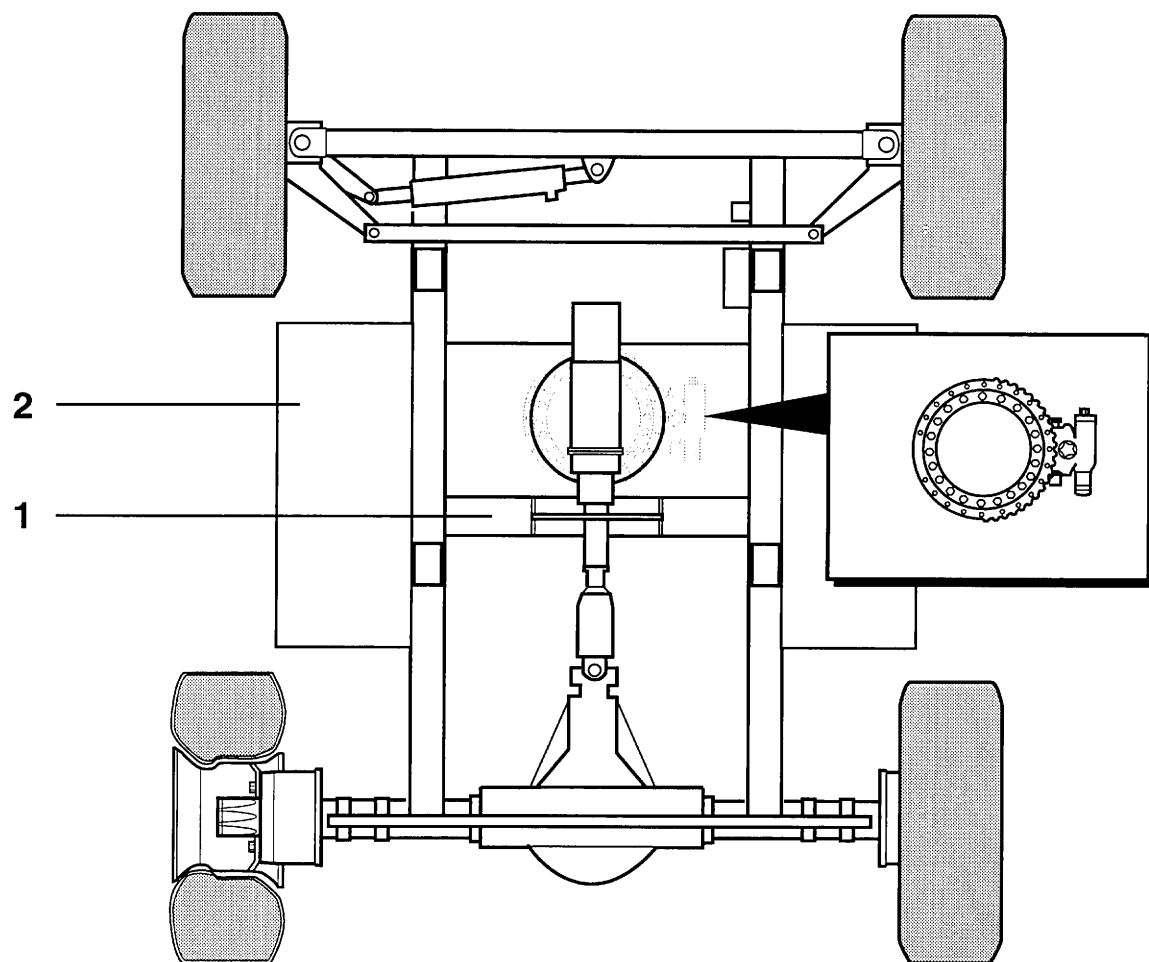


REV. 10/9/89

PRIMARY MACHINE COMPONENTS 32/21

PARTS LIST

[illegible]



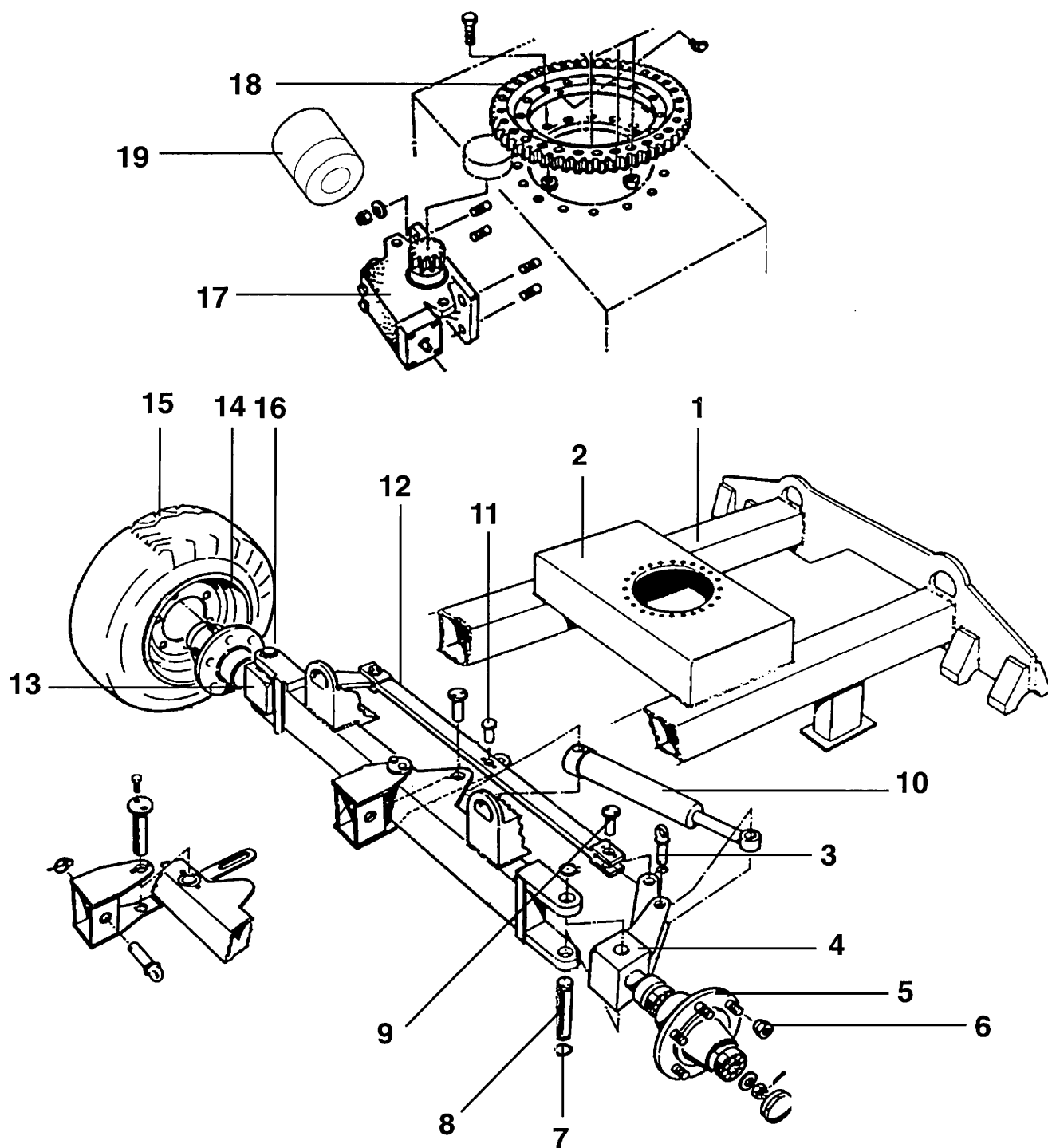
DESCRIPTION

UNDERCARRIAGE (SHEET 1 OF 3)

PART NO.

PARTS LIST

ITEM	PART NUMBER	SEC.	DESCRIPTION	QTY.
1			CHASSIS	1
2			MOUNTING, BEARING, SWING	1
3	10-098900		PIN, ROD END, CYLINDER, STEER	1
4	02-024400		SPINDLE, L. H., ASSY	1
5	10-099000		ADAPTER, WHEEL	2
6	10-099001		NUT, WHEEL	12
7	08-064700		RING, RETAINING	4
8	10-099100		PIN, SPINDLE	2
9	10-099200		PIN, TIE ROD	1
10	04-026800		CYLINDER, STEER	1
11	10-099300		PIN, BLOCK END, CYLINDER, STEER	1
12	10-095700		TIE ROD	1
13	02-024300		SPINDLE, R. H.	1
14	2136980		RIM, STEER	2
15	02-023200		TIRE	4
16	08-064800		WASHER, THRUST	1
17	02-016700		GEAR BOX, SWING	1
18	08-058700		BEARING, SWING	1
19	01-067400		MOTOR, SWING	1
DESCRIPTION			UNDERCARRIAGE (SHEET 2 OF 3)	PART NO.



DESCRIPTION

UNDERCARRIAGE (SHEET 2 OF 3)

PART NO.

PARTS LIST

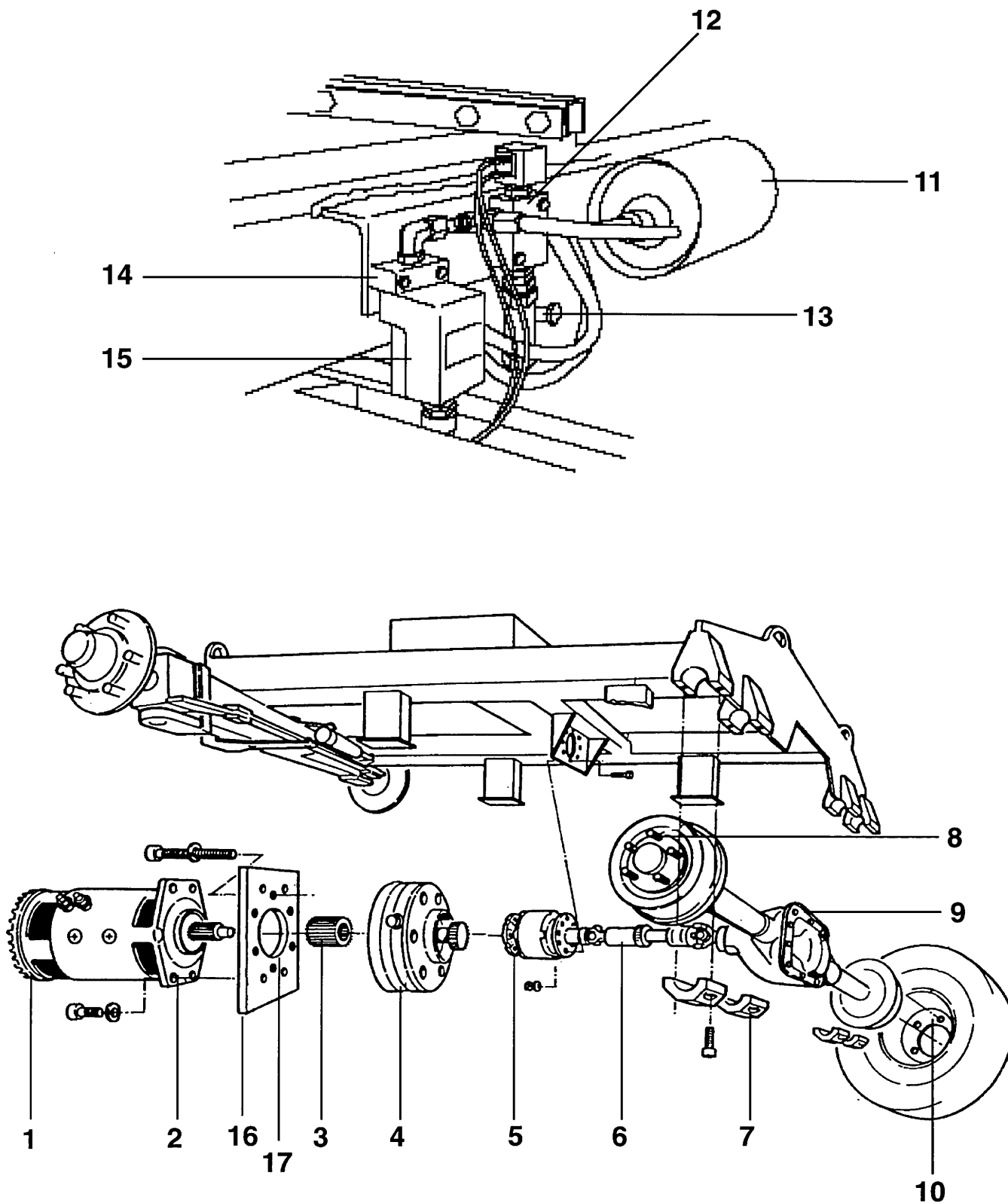
ITEM	PART NUMBER	SEC.	DESCRIPTION	QTY.
1	03-408000		MOTOR, ELECTRIC	1
2			PLATE, MOUNTING, MOTOR	1
3	02-024900		ADAPTER, DRIVE	1
4	02-024200		BRAKE	1
5	02-026100		REDUCER, SPEED	1
6	02-024500		SHAFT, DRIVE	1
7	02-024900		CLAMP, AXLE, BOTTOM	8
8			NUT, WHEEL, AXLE, DRIVE	10
9	02-022200		AXLE, DRIVE	1
10	2136970		RIM, DRIVE	2
11	01-080900		ACCUMULATOR	1
12	01-087000		VALVE, 3-WAY	1
13	01-018900		VALVE, FLOW CONTROL	1
14	01-081400		SUBPLATE	1
15	01-081300		SWITCH, PRESSURE	1
16	2159020		PLATE, ADAPTER (MOTOR TO BRAKE)	1
17	01-097000		SEAL, OIL (METRIC)	1

DESCRIPTION

UNDERCARRIAGE (SHEET 3 OF 3)

REV. 10/9/89

PART NO.



DESCRIPTION

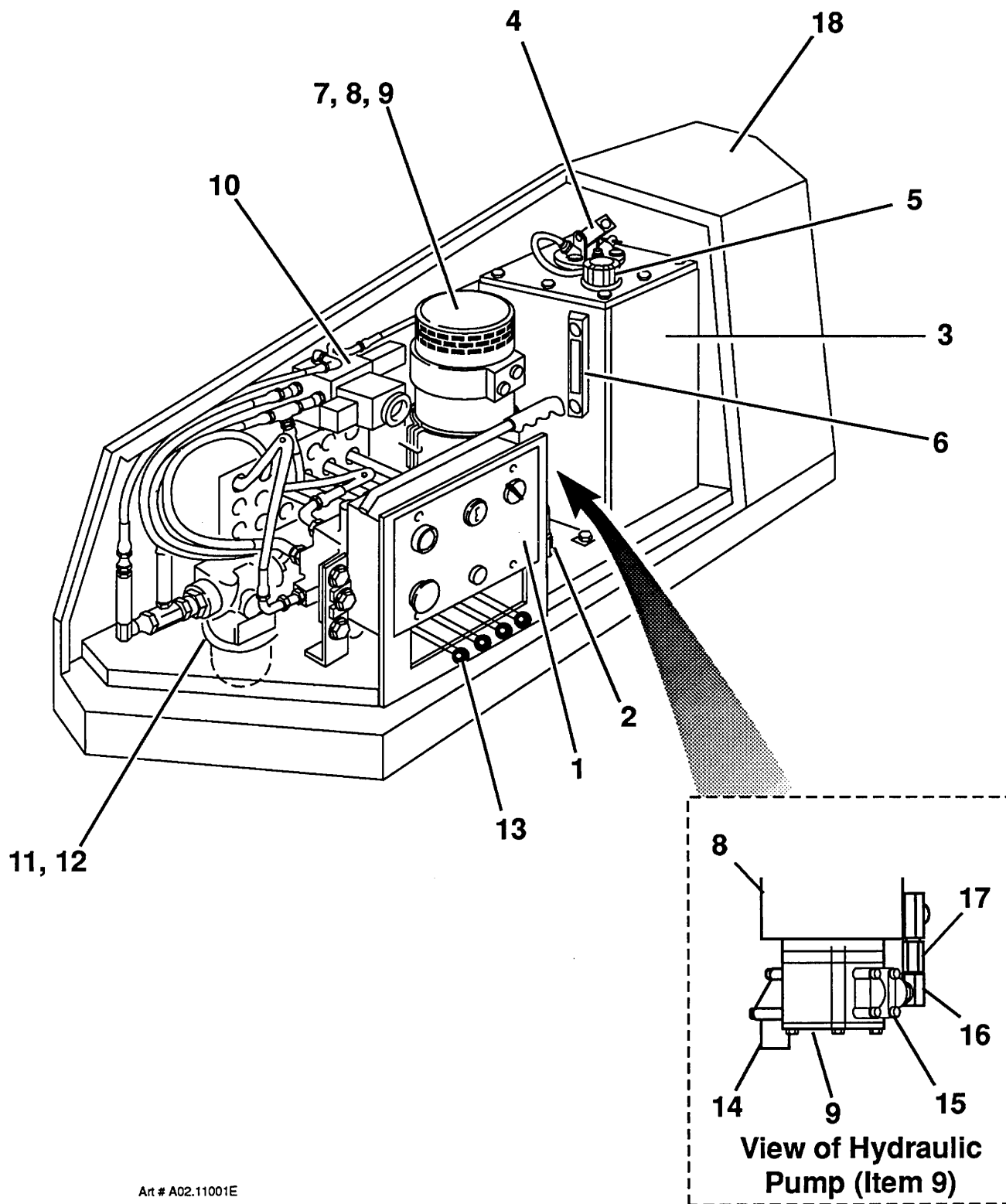
UNDERCARRIAGE (SHEET 3 OF 3)

REV. 10/9/89

PART NO.

PARTS LIST					
ITEM	PART NO	SEE SECTION	DESCRIPTION	QTY.	
1	See Plate . .	07.14	BOX ASSEMBLY, GROUND CONTROL	1	
2	01-091800		BLOCK, MANIFOLD	1	
3	01-089200		TANK, HYDRAULIC	1	
4	01-066100		PUMP, EMERGENCY (Hand operated)	1	
5	10-102800		CAP, HYDRAULIC TANK FILLER	1	
6	10-102700		GAUGE, OIL LEVEL (Sight gauge)	1	
7	01-067200		PUMP AND MOTOR ASSEMBLY, HYDRAULIC	1	
8	01-067201		MOTOR, ELECTRIC (48 Volt DC)	1	
9	01-067202		PUMP, HYDRAULIC	1	
10	01-087300		BLOCK, VALVE	1	
11	01-087800		FILTER ASSEMBLY	1	
12	01-087801		ELEMENT, FILTER	1	
13	01-072800	6.8	VALVE BANK ASSEMBLY, GROUND	1	
14	06-205400		90° ELBOW, FLANGED (4 bolt, 3/4" BSP)	1	
15	06-205300		90° ELBOW, FLANGED (4 bolt, 1/2" BSP)	1	
16	06-205600		90° COMPACT ELBOW, (3/8" BSP, M. F.)	1	
17	06-205500		ADAPTER, COMPACT(Straight, 3/8" to 1/2" BSP) (M. M.)	1	
18	10-003000		COVER, BALLAST (Hydraulic side)	1	
			The following items are not shown:		
19	10-106700		DOOR, HYDRAULIC COMPARTMENT	1	
20	10-095600		HINGE, DOOR	2	
21	10-095500		LATCH, DOOR	1	
22	10-106000		SPRING, GAS (Gas cylinder, door opening)	1	
23	07-080004		PIN, LOCK (1-1/4" 7")	1	
TITLE SUPERSTRUCTURE (HYDRAULIC SIDE), SILVER EAGLE 32/21 ELECTRIC					
PLATE NO.	02.11	SIMON AERIALS INC.	REV. 27 AUG., 1993	PART NO.	

PLATE NO.	02.11	SIMON AERIALS INC.	REV. 27 AUG., 1993	PART NO.
-----------	-------	--------------------	--------------------	----------



Art # A02.11001E

TITLE SUPERSTRUCTURE (HYDRAULIC SIDE), SILVER EAGLE 32/21 ELECTRIC

SIMON AERIALS INC.

REV. 27 AUG., 1993

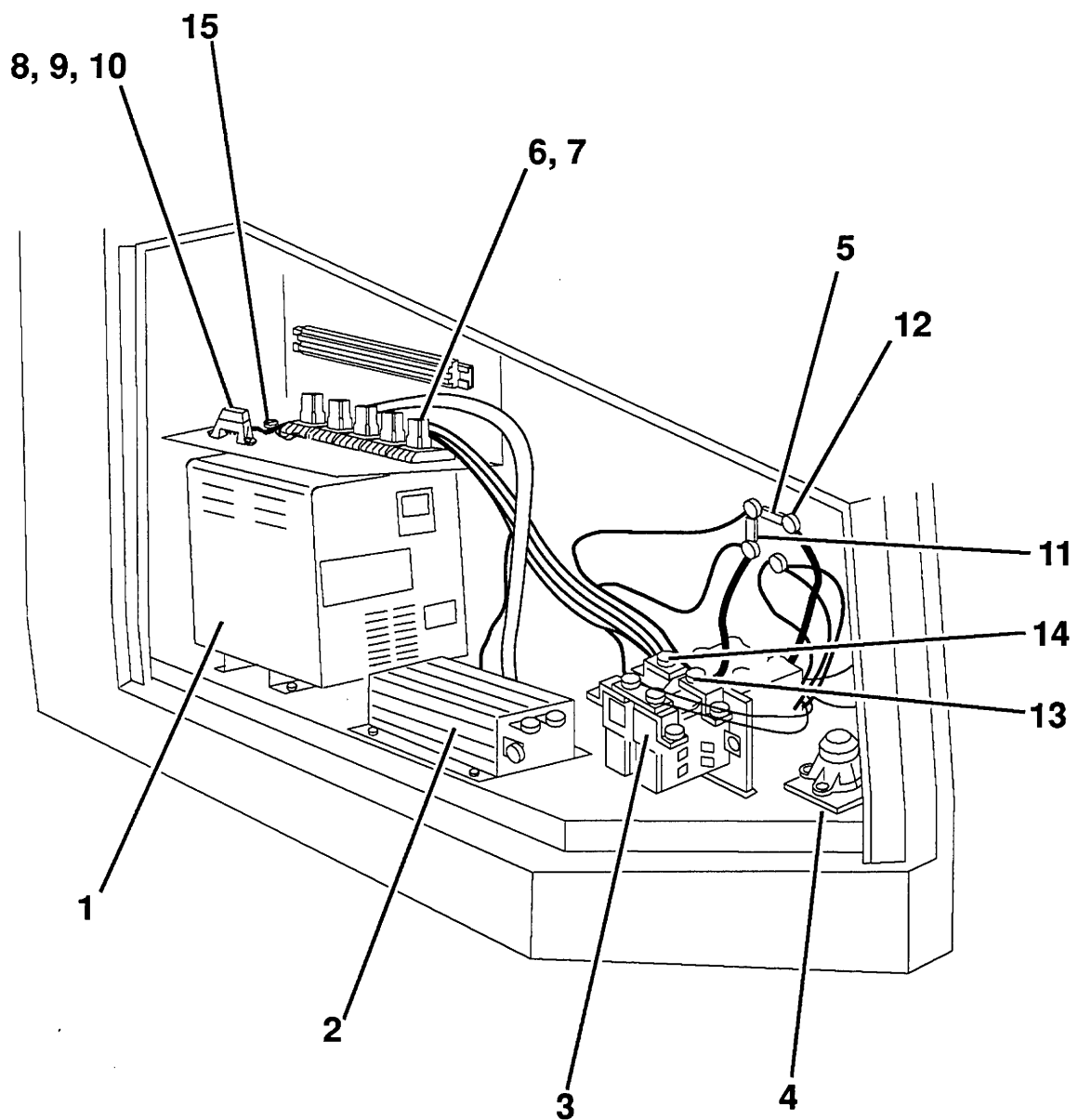
PART
NO.

PLATE
NO.

02.11

PARTS LIST				
ITEM	PART NO	SEE SECTION	DESCRIPTION	QTY.
1	03-408200	30.09	CHARGER, BATTERY (supercedes 03-053600)	1
2	03-455200		CONTROLLER, SCR (Motor speed controller)	1
3	03-454300		CONTACTOR, MOTOR (Forward/ Reverse) (SW 182B-150)	1
4	03-023900		ALARM, TILT	1
5	03-454600		FUSE (125 Amp)	1
6	03-410400		RELAY (48 Volt DC, Double pole, double throw)	6
7	03-037500		SOCKET, RELAY	6
8	03-458800		HOLDER, FUSE	1
9	03-452700		FUSE (5 Amp)	2
10	03-452800		FUSE (10 Amp)	2
11	03-406900		FUSE (325 Amp)	1
12	03-458900		STAND OFF, FUSE	A.R.
13	03-459000		CONTACTOR, MOTOR (Lift) (SW 180B-8)	1
14	03-459100		CONTACTOR, MOTOR (Drive) (SW 180B-205)	1
15	03-451700		POTENTIOMETER (20 K Ohm)	1
			The following items are not shown:	
16	03-454500		HORN	1
17	10-002900		COVER, BALLAST (Electrical side)	1
18	10-106600		DOOR, ELECTRICAL COMPARTMENT	1
19	10-095600		HINGE, DOOR	2
20	10-095500		LATCH, DOOR	1
21	10-106000		SPRING, GAS (Gas cylinder, door opening)	1
TITLE SUPERSTRUCTURE (ELECTRICAL SIDE), SILVER EAGLE 32/21 ELECTRIC				
PLATE NO.	02.12	SIMON AERIALS INC.		PART NO.
				REV. 27 AUG., 1993

PLATE NO.	02.12	SIMON AERIALS INC.	REV. 27 AUG., 1993	PART NO.
-----------	-------	--------------------	--------------------	----------



TITLE SUPERSTRUCTURE (ELECTRICAL SIDE), SILVER EAGLE 32/21 ELECTRIC

SIMON AERIALS INC.

REV. 27 AUG., 1993

PART
NO.

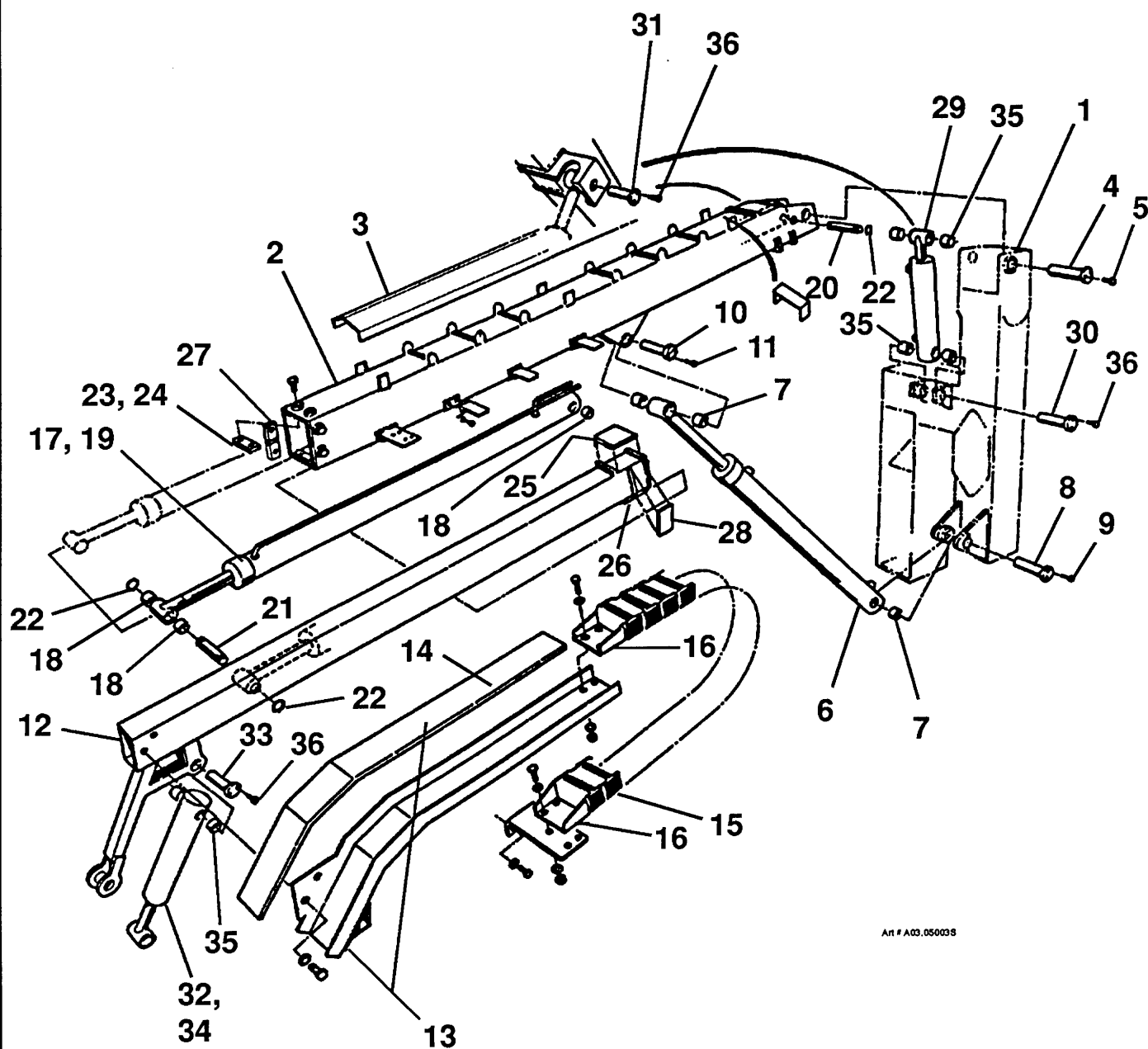
PLATE
NO.

02.12

PARTS LIST				
ITEM	PART NO	SEE SECTION	DESCRIPTION	QTY.
1			UPPER POST WELDMENT	1
2			BOOM WELDMENT, UPPER BASE	1
3	2158540		COVER, HOSE	1
4	10-100100		PIN, HEADED (Upper boom pivot)	1
5			SCREW	2
6	04-026900		CYLINDER, LIFT	1
7	08-059100		BUSHING, LIFT CYLINDER (case end)	2
8	10-099900		PIN, HEADED (Upper boom lift cylinder, case end)	1
9			SCREW	2
10	10-099900		PIN, HEADED (Upper boom lift cylinder, rod end)	1
11			SCREW	2
12			BOOM WELDMENT, UPPER TIP	1
13	10-092900		ANCHOR, MOVING (includes cover)	1
14	10-092901		COVER, MOVING ANCHOR	1
15	08-063500		CARRIER, HOSE	1
16	08-063502		FOOT, HOSE CARRIER (set of two)	2
17	04-027200		CYLINDER, TELESCOPE	1
18	08-064900		BUSHING	4
19	04-027201		CARTRIDGE, TELESCOPE CYLINDER HOLDING VALVE	1
20	10-083900		PIN, TELESCOPE CYLINDER (Case end)	1
21	10-081700		PIN, TELESCOPE CYLINDER (Rod end)	1
22			RING, RETAINING	4
23	10-100300		PAD, UPPER WEAR (upper end of base boom)	2
24	10-100700		PAD, LOWER WEAR (upper end of base boom)	2
25	10-100400		PAD, UPPER WEAR (lower end of tip boom)	2
26	10-100600		PAD, LOWER WEAR (lower end of tip boom)	2
27	10-100200		PAD, SIDE WEAR (upper end of base boom)	2
28	10-100500		PAD, SIDE WEAR (lower end of tip boom)	2
29	04-027000		CYLINDER, MASTER LEVELING	1
30	10-100000		PIN, HEADED (Master leveling cylinder, case end)	1
31	10-082200		PIN, HEADED (Master leveling cylinder, rod end)	1
32	04-027100		CYLINDER, SLAVE LEVELING	1
33	10-100000		PIN, HEADED (Slave leveling cylinder, case end)	1
34	10-082500		PIN, HEADED (Slave leveling cylinder, rod end)	1
35	08-044700		BUSHING	8
36			SCREW	8

UPPER BOOM ASSEMBLY, SILVER EAGLE

PART
NO.



Art # A03.050035

TITLE

UPPER BOOM ASSEMBLY, SILVER EAGLE

SIMON AERIALS INC.

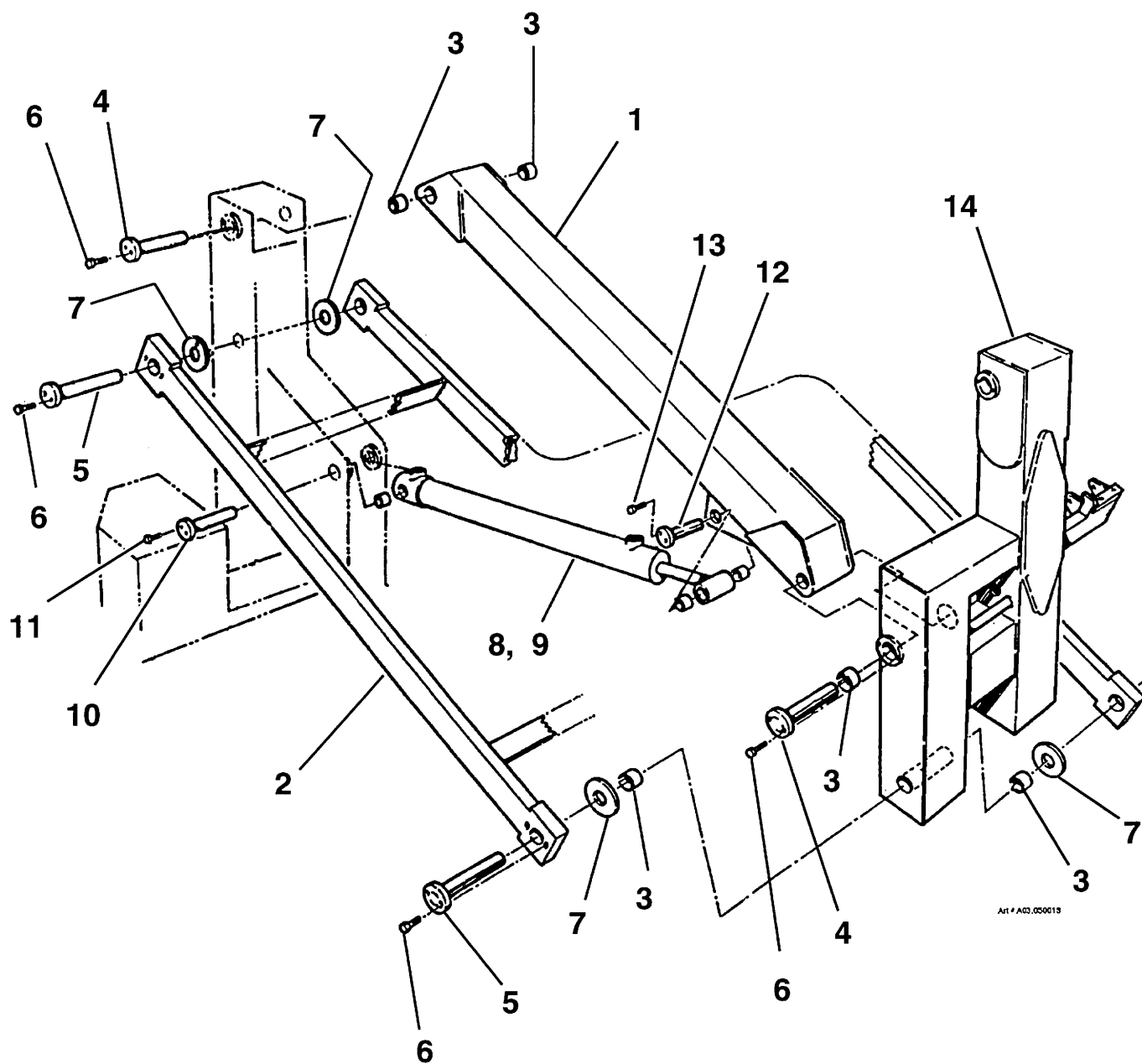
REV. 11/08/91

PART
NO.

PLATE
NO.

03.07

[illegible]PART
NO.



Art 4 AG3.050013

TITLE

LOWER BOOM ASSEMBLY, (SILVER EAGLE)

SIMON AERIALS INC.

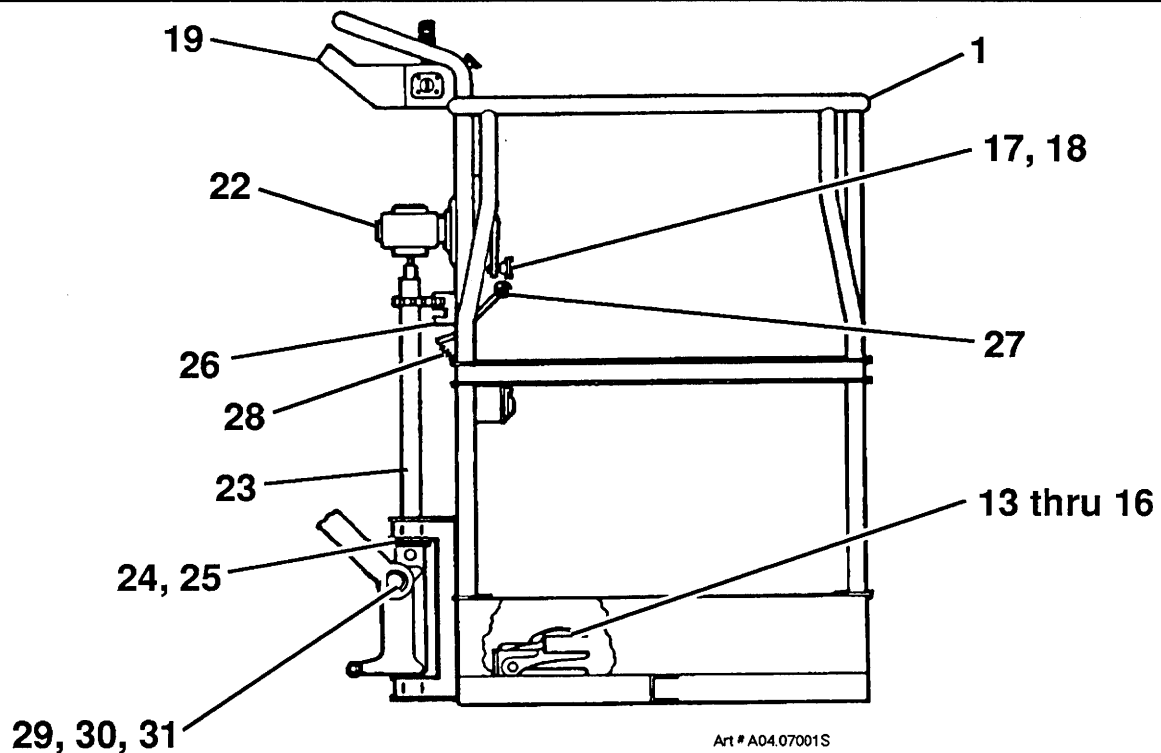
REV. 11/08/91

PART
NO.

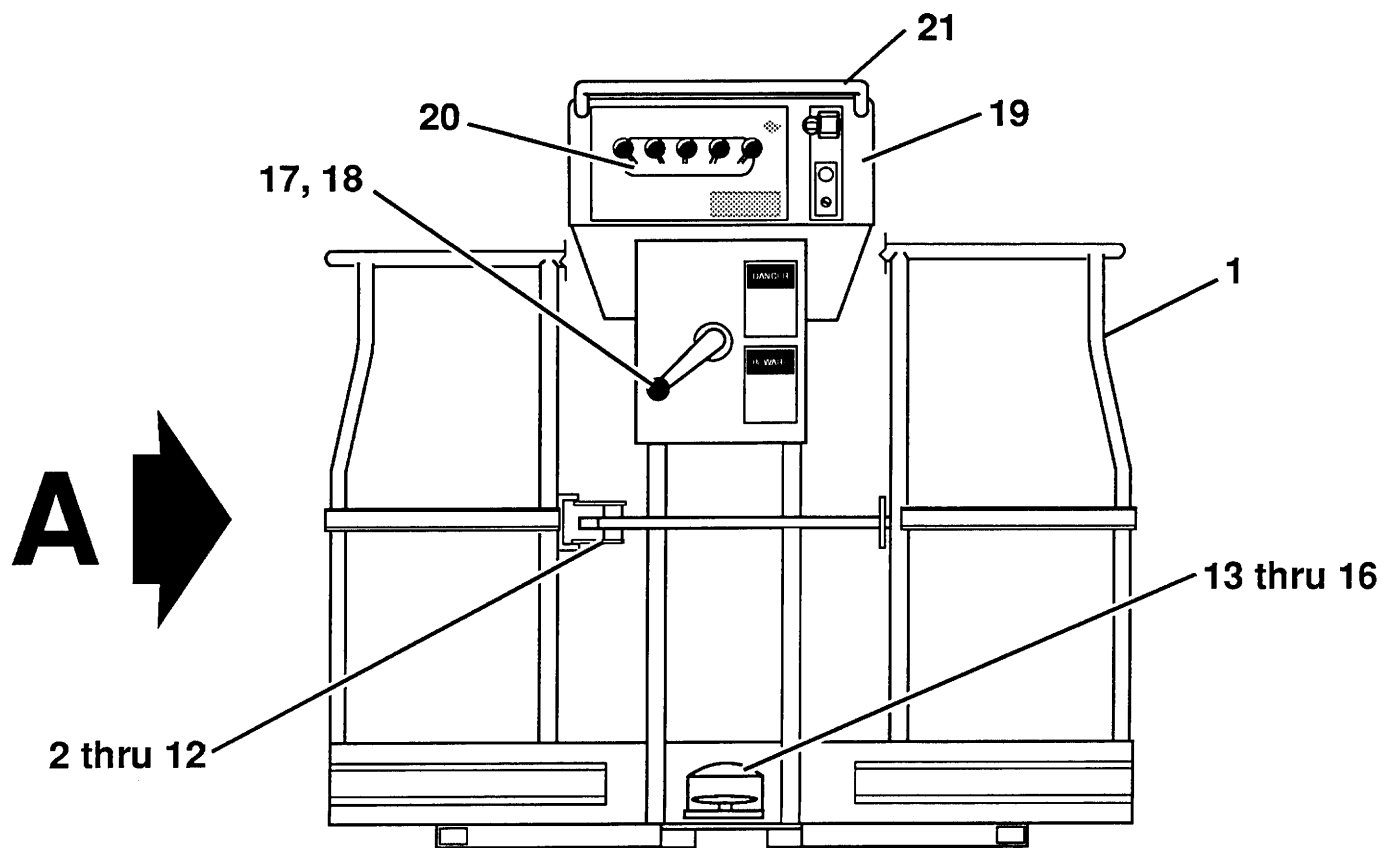
PLATE
NO.

03.08

PARTS LIST				
ITEM	PART NO	SEE SECTION	DESCRIPTION	QTY.
1			PLATFORM WELDMENT	
	2098130		30" x 60" (.76 M x 1.5 M), with manual rotator	1
	2173060		30" x 48" (.76 M x 1.2 M), with hydraulic rotator	1
	2150540		30" x 60" (.76 M x 1.5 M), with hydraulic rotator	1
2	3514160		BAR ASSEMBLY, LATCH	1
3	2041724		PIVOT, DOOR	1
4	2076577		BAR, LATCH	1
5	2041649		SPACER, LATCH BAR PIVOT	1
6	07-003047		CAP SCREW, HEX HEAD (3/8"-16 x 1-1/2", Grade 5)	1
7	07-050016		NUT, HEX LOCK (3/8"-16, Grade 5)	1
8	08-010100		SPRING AND TUBE ASSEMBLY	1
9	2108380		SPACER	1
10	07-003043		CAP SCREW, HEX HEAD (3/8"-16 x 3/4", Grade 5)	1
11	07-003096		CAP SCREW, HEX HEAD (1/2"-13 x 3-3/4", Grade 5)	1
12	07-050018		NUT, LOCK (1/2"-13, Grade 5)	1
13	03-021300		SWITCH ASSEMBLY, FOOT (Double pole)	1
14	03-021301		SWITCH (Double pole, double throw)	1
15	03-021302		COVER, SWITCH (Guard type, with latch)	1
16	03-021303		DECAL, "DANGER"	1
17	2098060		ARM, CRANK (Manual rotator)	1
18	10-064900		KNOB, CRANK ARM	1
19		9.12	CONSOLE ASSEMBLY, PLATFORM CONTROL	1
20		6.8	VALVE BANK ASSEMBLY, PLATFORM	1
21	2141640		BAR, GRAB	1
22			ROTATOR, PLATFORM	
	02-012400	21.01	with standard manual rotator (40:1 Speed reducer)	1
	2132120	21.03	with optional hydraulic rotator (not shown)	1
23	2102870		POST, PIVOT	1
24	08-014000		BEARING, SLEEVE	2
25	08-014100		WASHER, THRUST	1
26	2101710		LOCK, CAB PIVOT	1
27	10-042400		KNOB, PIVOT LOCK	1
28	10-067300		SPRING	1
29	10-082600		PIN, PLATFORM PIVOT	1
30	08-059100		BUSHING	2
31			RING, RETAINING	2
TITLE PLATFORM ASSEMBLY				
PLATE NO.	04.07	SIMON AERIALS INC.		PART NO.
REV. 02 SEP., 1993				



View in direction of arrow "A"



TITLE

PLATFORM ASSEMBLY

SIMON AERIALS INC.

REV. 02 SEP., 1993

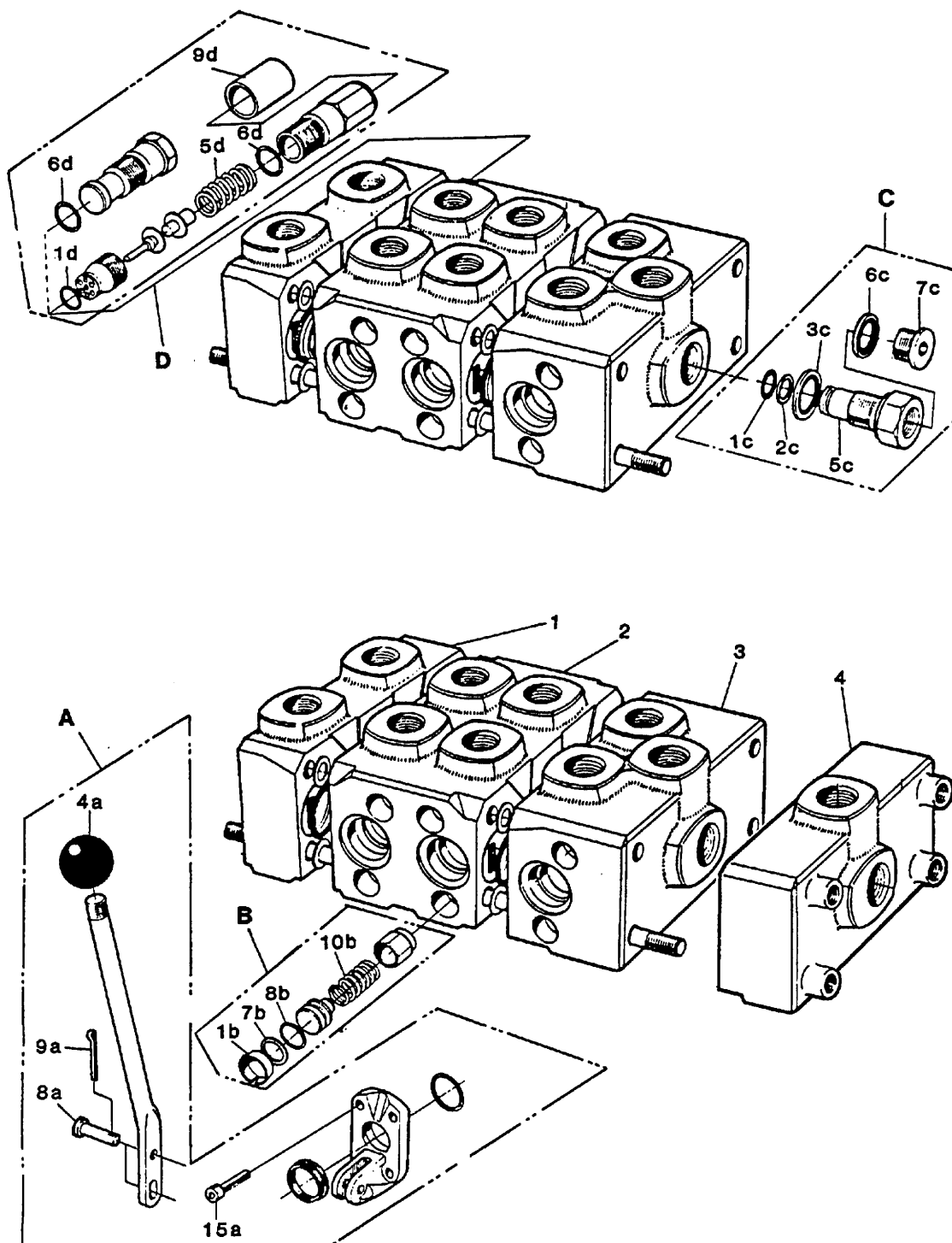
PART
NO.

PLATE
NO.

04.07

PARTS LIST

ITEM	PART NUMBER	SEC.	DESCRIPTION	QTY.
1			VALVE SECTION, INLET	1
2			VALVE SECTION, TELESCOPE & SWING	1
2			VALVE SECTION, LOWER & UPPER BOOM	1
2			VALVE SECTION, LEVEL & UPPER BOOM	1
3			VALVE SECTION, OUTLET & UPPER BOOM	1
4			VALVE SECTION, OUTLET	1
A	01-072701		LEVER ASSEMBLY, HAND	
4A	01-072702		BALL, LEVER	1
8A			BOLT	1
9A			PIN, COTTER	1
15A			SCREW	2
B	01-072704		CHECK VALVE ASSEMBLY	
1B			CAP, PROTECTIVE	1
7B			RING, BACK-UP	1
8B			O-RING	1
10B			SPRING	1
C	01-072708		* VALVE, TANK PORT CONNECTOR	
C	01-072711		^ VALVE, PORT CONNECTOR BLOCKING	
*^1C			O-RING	1
*^2C			RING, BACK-UP	1
*^3C			SEAL	1
^6C			RING, SEAL	1
^7C			PLUG	1
D	01-072703		MAIN RELIEF VALVE ASSEMBLY	
1D			O-RING	1
5D			SPRING	1
6D			O-RING	2
9D			CAP, SEAL	1
DESCRIPTION			PART NO.	
GROUND/PLATFORM VALVE BANK ASSY (SHEET 1 OF 2)				

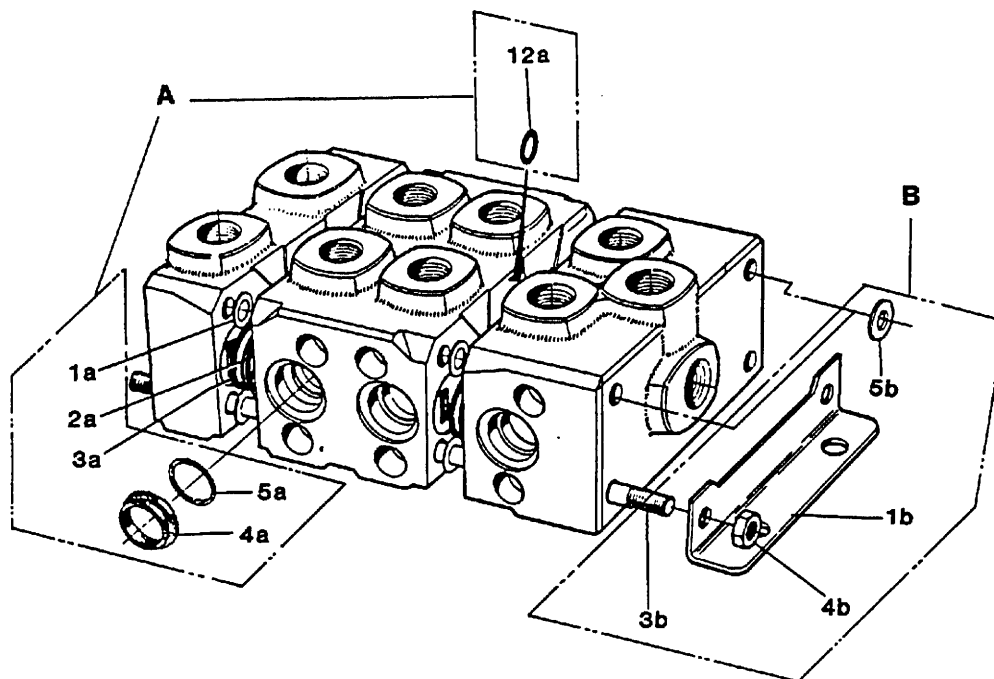
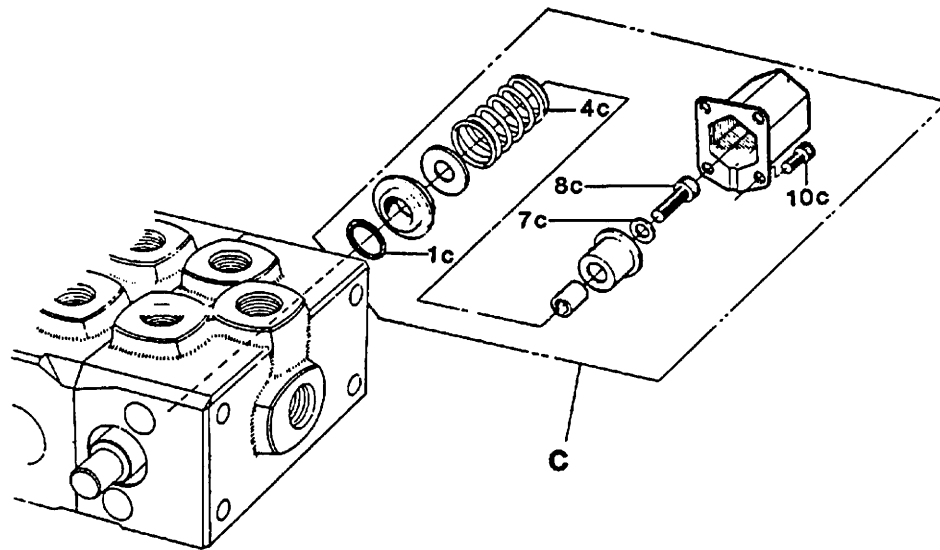


DESCRIPTION
GROUND/PLATFORM VALVE BANK ASSY (SHEET 1 OF 2)

PART NO.

PARTS LIST

ITEM	PART NUMBER	SEC.	DESCRIPTION	QTY.
A	01-072709		KIT, SEAL	1
1A			RING, SPACER	
2A			O-RING	
3A			RING, BACK-UP	
4A			SEAL	
5A			O-RING	
12A			O-RING	
B	01-072705		KIT, TIE ROD (4 SECTION VALVE BANK)	1
B	01-072706		KIT, TIE ROD (5 & 6 SECTION VALVE BANK)	1
1B			PLATE, MOUNTING	1
3B			TIE ROD	4
4B			NUT	8
5B			WASHER	8
C	01-072710		SPRING & CAP ASSEMBLY	1
1C			O-RING	1
4C			SPRING	1
7C			WASHER	1
8C			SCREW	1
10C			SCREW	21
DESCRIPTION			PART NO.	
GROUND/PLATFORM VALVE BANK ASSY (SHEET 2 OF 2)				

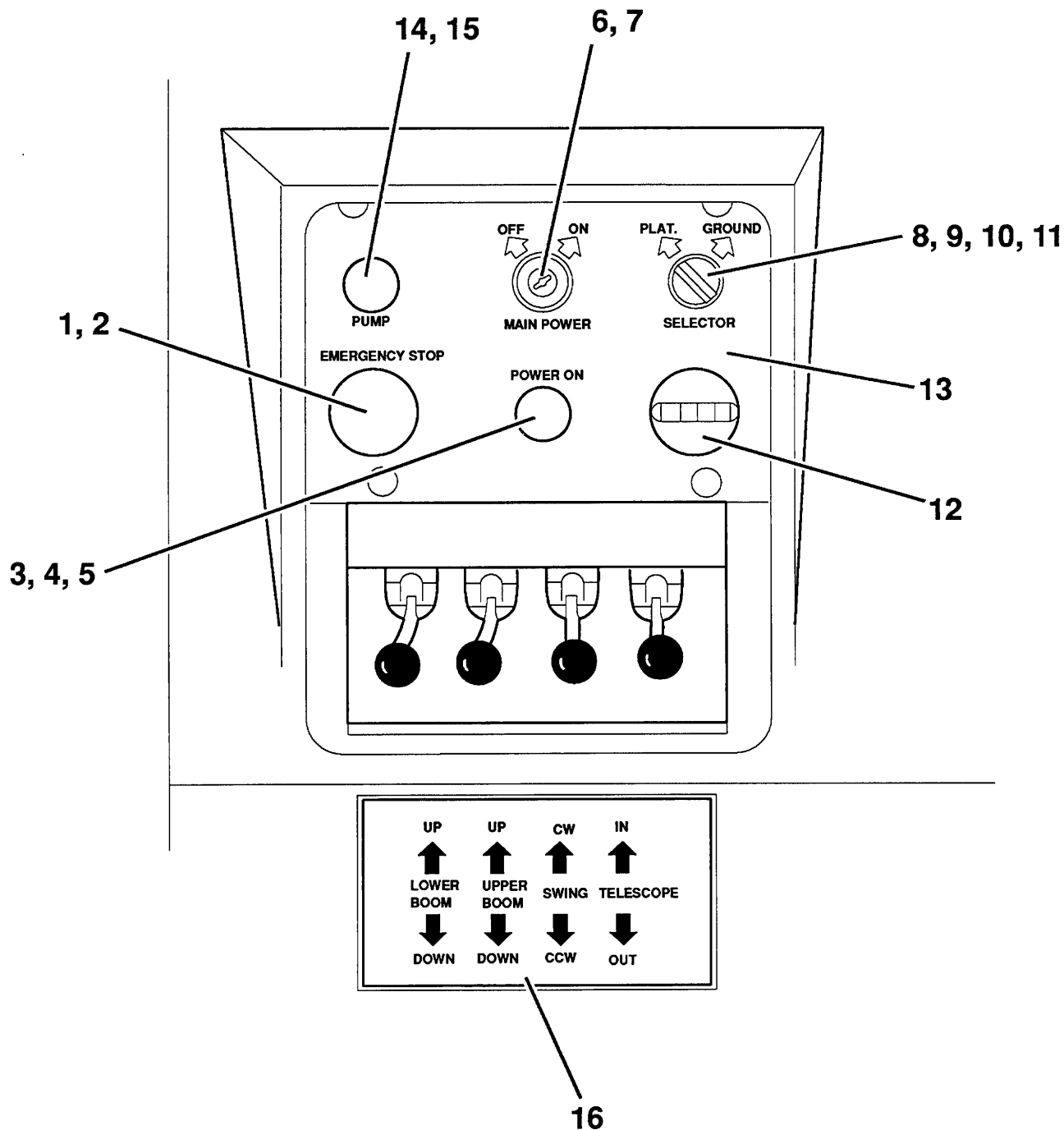


DESCRIPTION
GROUND/PLATFORM VALVE BANK ASSY (SHEET 2 OF 2)

PART NO.

[illegible]

PLATE NO.	07.14	SIMON AERIALS INC.	REV. 07 SEP., 1993	PART NO.
-----------	-------	--------------------	--------------------	----------



TITLE GROUND CONTROL BOX, SILVER EAGLE 32/21 (ELECTRIC)

SIMON AERIALS INC.

REV. 07 SEP., 1993

PART
NO.

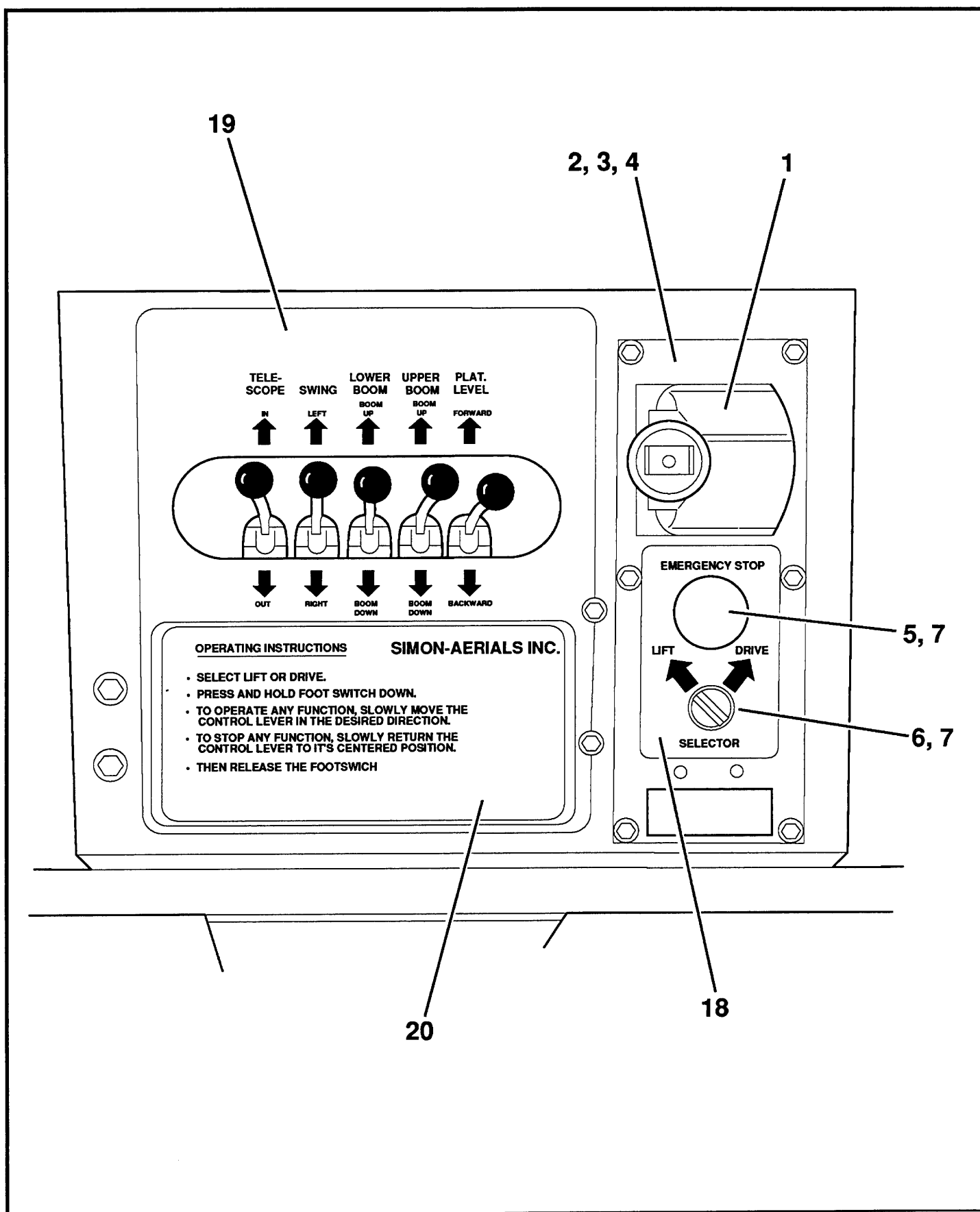
PLATE
NO.

07.14

[illegible]

PLATE NO.	09.12	SIMON AERIALS INC.
-----------	-------	--------------------

PART
NO.



TITLE PLATFORM CONTROL CONSOLE, SILVER EAGLE 32/21 (ELECTRIC)

SIMON AERIALS INC.

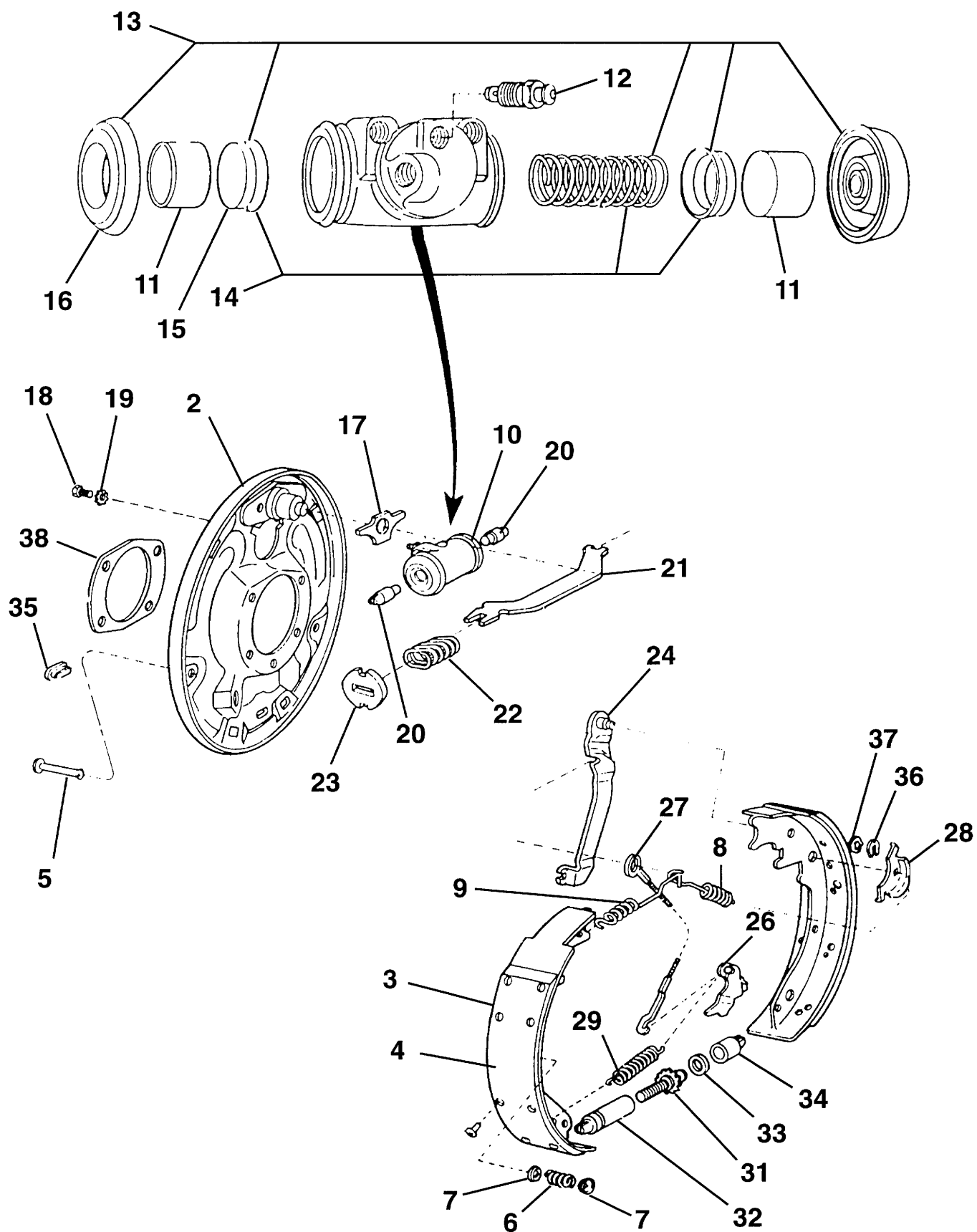
REV. 12 AUG., 1993

PART
NO.

PLATE
NO.

09.12

[illegible]PART
NO.



TITLE

REAR DRUM BRAKE ASSEMBLY (PLATE 1 OF 3)

SIMON AERIALS INC.

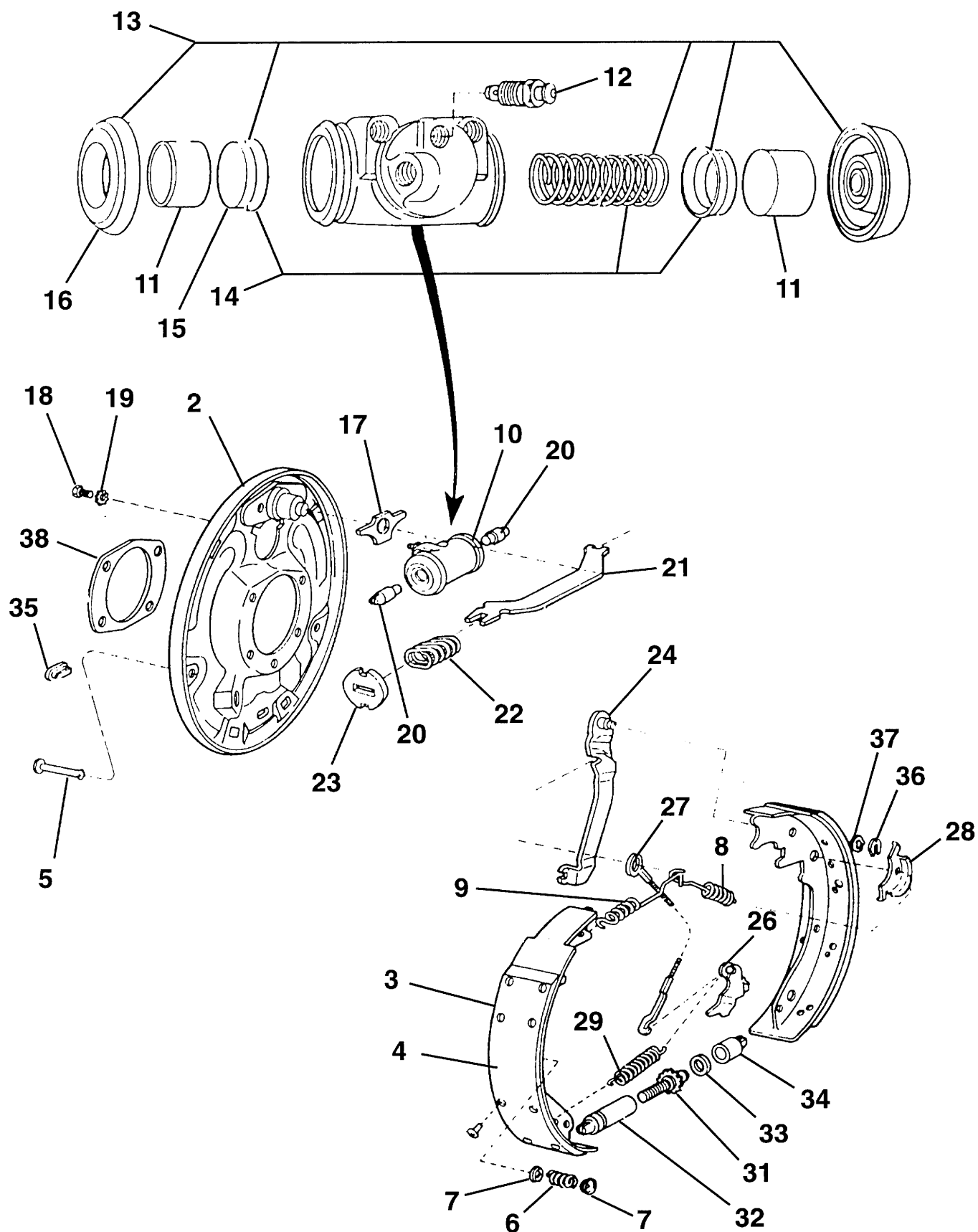
REV. 04 JAN., 1996

PART
NO.

PLATE
NO.

18.06

PARTS LIST				
ITEM	PART NO	SEE SECTION	DESCRIPTION	QTY.
10			CYLINDER ASSEMBLY, WHEEL for models that actuate brakes with hydraulic fluid from main system (If unsure, consult factory, give model & S/N):	1
			⚠ WARNING	
			USE OF A WHEEL CYLINDER MADE FOR USE WITH DOT-3 BRAKE FLUID ON A SYSTEM USING HYDRAULIC FLUID WILL CAUSE RAPID SYSTEM CONTAMINATION AND FAILURE.	
	55-000210		Right hand (earlier versions were listed as 02-022252)	
	55-000211		Left hand (earlier versions were listed as 02-022251) for models that actuate brakes with DOT-3 brake fluid from a separate system (If unsure, consult factory):	
	02-022268		Right hand	
	02-022269		Left hand	
11	02-022246		PISTON, WHEEL CYLINDER	2
12	02-022248		SCREW, WHEEL CYLINDER BLEED	1
13			WHEEL CYLINDER REPAIR KIT	1
			⚠ WARNING	
			USE OF A REPAIR KIT MADE FOR USE WITH DOT-3 BRAKE FLUID ON A SYSTEM USING HYDRAULIC FLUID WILL CAUSE RAPID SYSTEM CONTAMINATION AND FAILURE.	
			Note: Use of a repair kit made for use with hydraulic fluid on a system using DOT-3 brake fluid is acceptable .	
	02-022261		for use with hydraulic fluid	
	02-022267		for use with DOT-3 brake fluid only	
14	02-022260		EXPANDER AND SPRING ASSEMBLY	1
15			CUP, WHEEL CYLINDER (.938" [23.8 mm] dia.)	2
	01-095000		Special, for use with hydraulic fluid . Simon part number is molded into cup	
	-----		For use with DOT-3 brake fluid only (Not available separately. Can use 01-095000.)	
16			BOOT, WHEEL CYLINDER	2
TITLE REAR DRUM BRAKE ASSEMBLY (PLATE 2 OF 3)				
PLATE NO.	18.06	SIMON AERIALS INC.		PART NO.
		REV. 04 JAN., 1996		



TITLE

REAR DRUM BRAKE ASSEMBLY (PLATE 2 OF 3)

SIMON AERIALS INC.

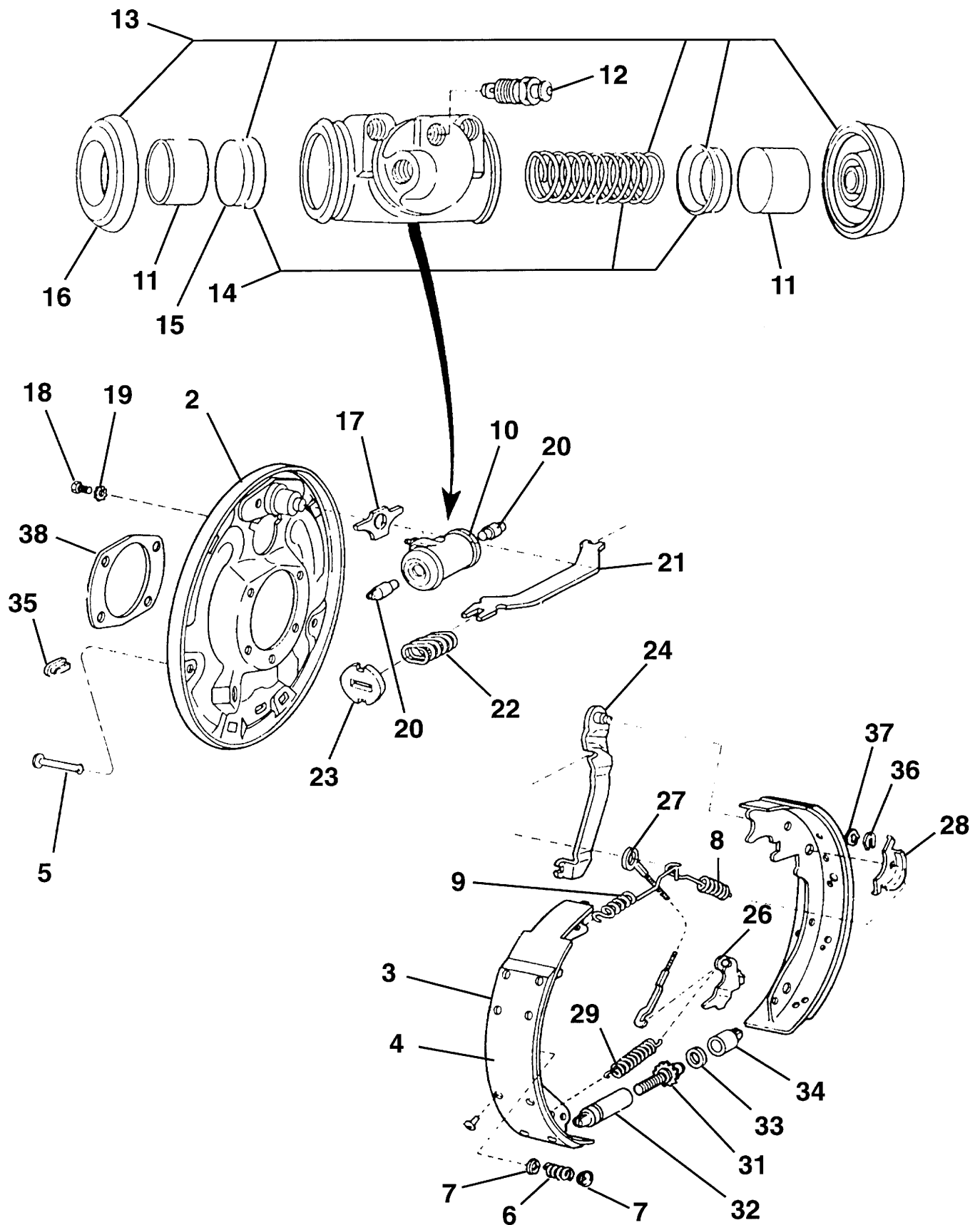
REV. 04 JAN., 1996

PART
NO.

PLATE
NO.

18.06

PARTS LIST				
ITEM	PART NO	SEE SECTION	DESCRIPTION	QTY.
17	02-022233		PLATE, WHEEL CYLINDER MOUNTING	1
18			BOLT, BRAKE CYLINDER RETAINING	2
19			WASHER, BRAKE CYLINDER RETAINING	2
20	02-022237		LINK, WHEEL CYLINDER	2
21			STRUT, PARKING BRAKE	1
	02-022256		Right hand	
	02-022257		Left hand	
22	02-022253		SPRING, STRUT	1
23	02-022258		RETAINER	1
24			LEVER, PARKING BRAKE	1
	02-022254		Right hand	
	02-022255		Left hand	
25	02-022245		LEVER KIT, ADJUSTER	1
26			LEVER	1
27			CABLE ASSEMBLY (must be discarded)	1
28			GUIDE, CABLE	1
29	02-022238		SPRING, ADJUSTER	1
30			SCREW KIT, ADJUSTER	
	02-022235		Right hand	1
	02-022236		Left hand	1
31			SCREW, ADJUSTER	1
32			SOCKET, ADJUSTER (threaded)	1
33	02-022259		WASHER	1
34			SOCKET, ADJUSTER (non-threaded)	1
35	02-022241		COVER	1
36	02-022242		RETAINER, LEVER PIN	1
37	02-022243		WASHER, SPRING	1
38	02-022264		GASKET	1
TITLE REAR DRUM BRAKE ASSEMBLY (PLATE 3 OF 3)				
PLATE NO.	18.06	SIMON AERIALS INC.		PART NO.
REV. 04 JAN., 1996				



TITLE

REAR DRUM BRAKE ASSEMBLY (PLATE 3 OF 3)

SIMON AERIALS INC.

REV. 04 JAN., 1996

PART
NO.

PLATE
NO.

18.06

PARTS LIST

ITEM	PART NO	SEE SECTION	DESCRIPTION	QTY.
1	02-022217		HOUSING ASSEMBLY, AXLE	1
2	02-022230		COVER, DIFFERENTIAL HOUSING	1
3	02-022229		SEALANT, RTV (Ford #D6AZ 19562-ba or equivalent)	A.R.
4	02-022231		BOLT, DIFFERENTIAL HOUSING COVER	10
5	02-022201		AXLE SHAFT ASSEMBLY (includes "O"-Ring) (Right)	1
	02-022202		AXLE SHAFT ASSEMBLY (includes "O"-Ring) (Left)	1
6	02-022203		"O"-RING, AXLE SHAFT	1
7	02-022211		BOLT, WHEEL LUG	A.R.
8	02-022212		SEAL, OUTER WHEEL BEARING OIL	2
9	02-022213		BEARING ASSEMBLY, WHEEL (Outer)	2
10	02-022216		GEAR SET, AXLE RING AND PINION (3.55:1)	1
11			NUT, LOCK	1
12	02-022215		CONE AND ROLLER, PINION BEARING (Rear)	1
13	02-022214		CUP, PINION BEARING (Rear)	1
14	02-022205		SPACER, PINION BEARING	1
15	02-022204		CUP, PINION BEARING (Front)	1
16	02-022206		CONE AND ROLLER, PINION BEARING (Front)	1
17	02-022207		SEAL, PINION SHAFT OIL	1
18	02-022208		SLINGER, PINION SHAFT OIL	1
19	02-022209		FLANGE ASSEMBLY, YOKE (includes deflector)	1
20	02-022210		DEFLECTOR, OIL SEAL	1
21	02-022221		CASE, DIFFERENTIAL	1
22	02-022224		GEAR, AXLE SHAFT	2
23	02-022225		PIN, DIFFERENTIAL PINION SHAFT LOCK	1
24	02-022226		PINION KIT, DIFFERENTIAL (incl. 2 gears and 2 washers)	1
25	02-022228		WASHER, PINION	2
26	02-022222		CLUTCH, DIFFERENTIAL SPRING	1
27	02-022227		SHAFT, DIFFERENTIAL PINION	1
28	02-022232		"U"-WASHER	2
29	02-022223		DISC KIT, DIFFERENTIAL (one kit needed per axle side)	2
30	02-022218		CUP, DIFFERENTIAL BEARING	2
31	02-022219		CONE AND ROLLER, DIFFERENTIAL BEARING	2
32			SHIM, DIFFERENTIAL BEARING ADJUSTMENT	A.R.
33	02-022220		BOLT, RING GEAR	10
34	See plate...	18.06	BRAKE ASSEMBLY, REAR DRUM (not shown)	2
			The following items are not part of Axle Assembly 02-022200:	
35	10-099001		NUT, WHEEL LUG (not shown)	12

TITLE

REAR AXLE ASSEMBLY

PLATE NO.

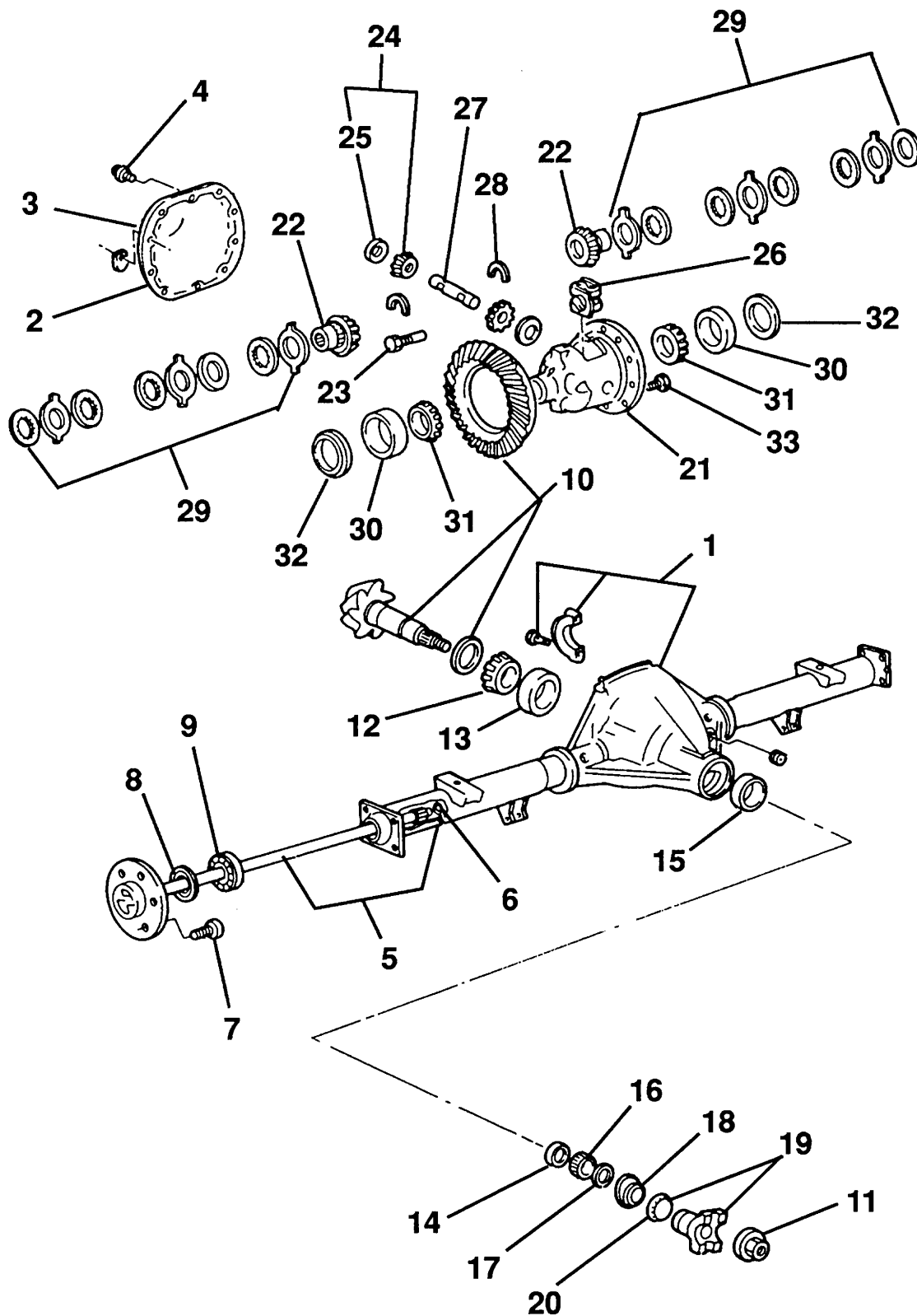
19.01

SIMON AERIALS INC.

REV. 20 SEP., 1993

PART NO.

02-022200



TITLE

REAR AXLE ASSEMBLY

SIMON AERIALS INC.

REV. 20 SEP., 1993

PART
NO.

02-022200

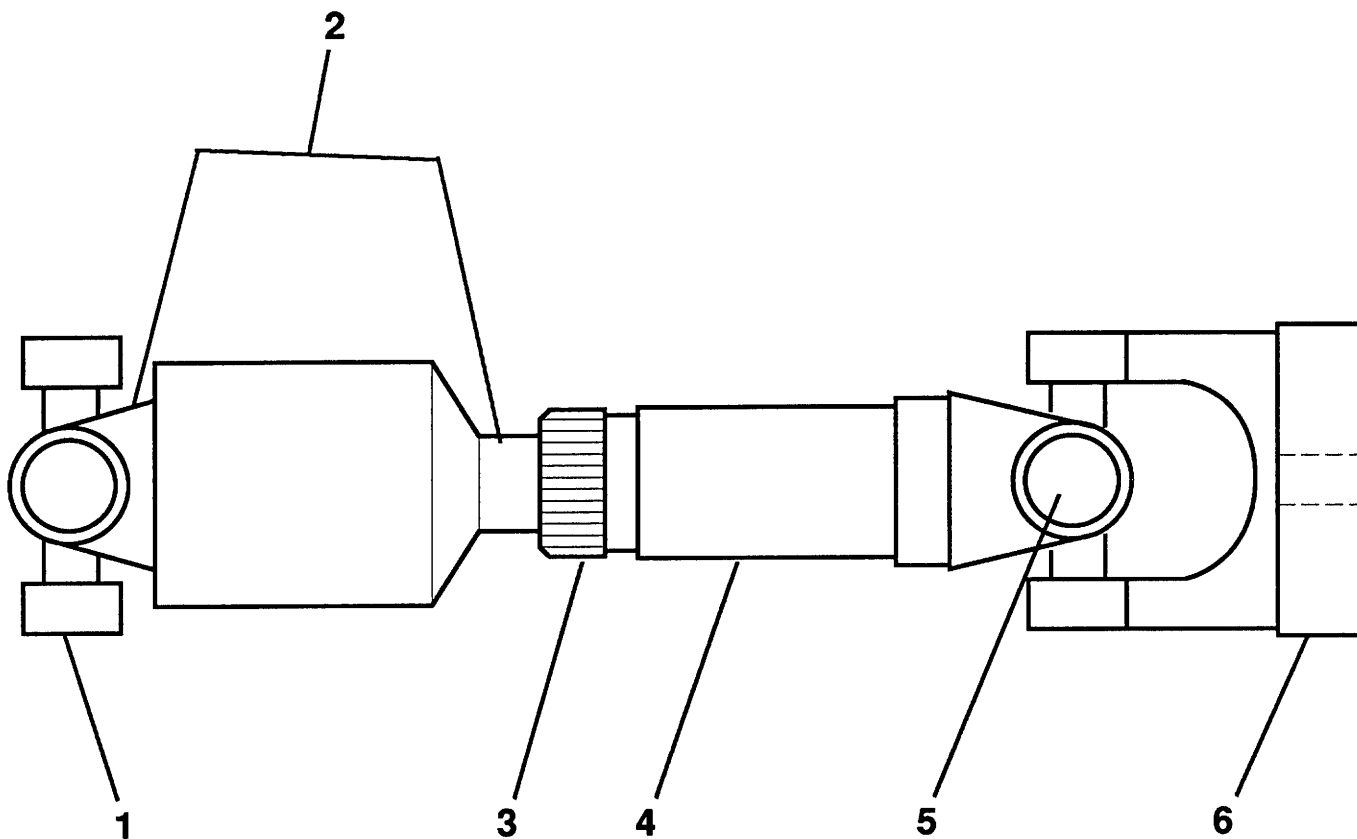
PLATE
NO.

19.01

[illegible]

REAR DRIVE SHAFT

02-024500



TITLE

REAR DRIVE SHAFT

SIMON AERIALS INC.

REV. 17 AUG., 1993

PART
NO.

02-024500

PLATE
NO.

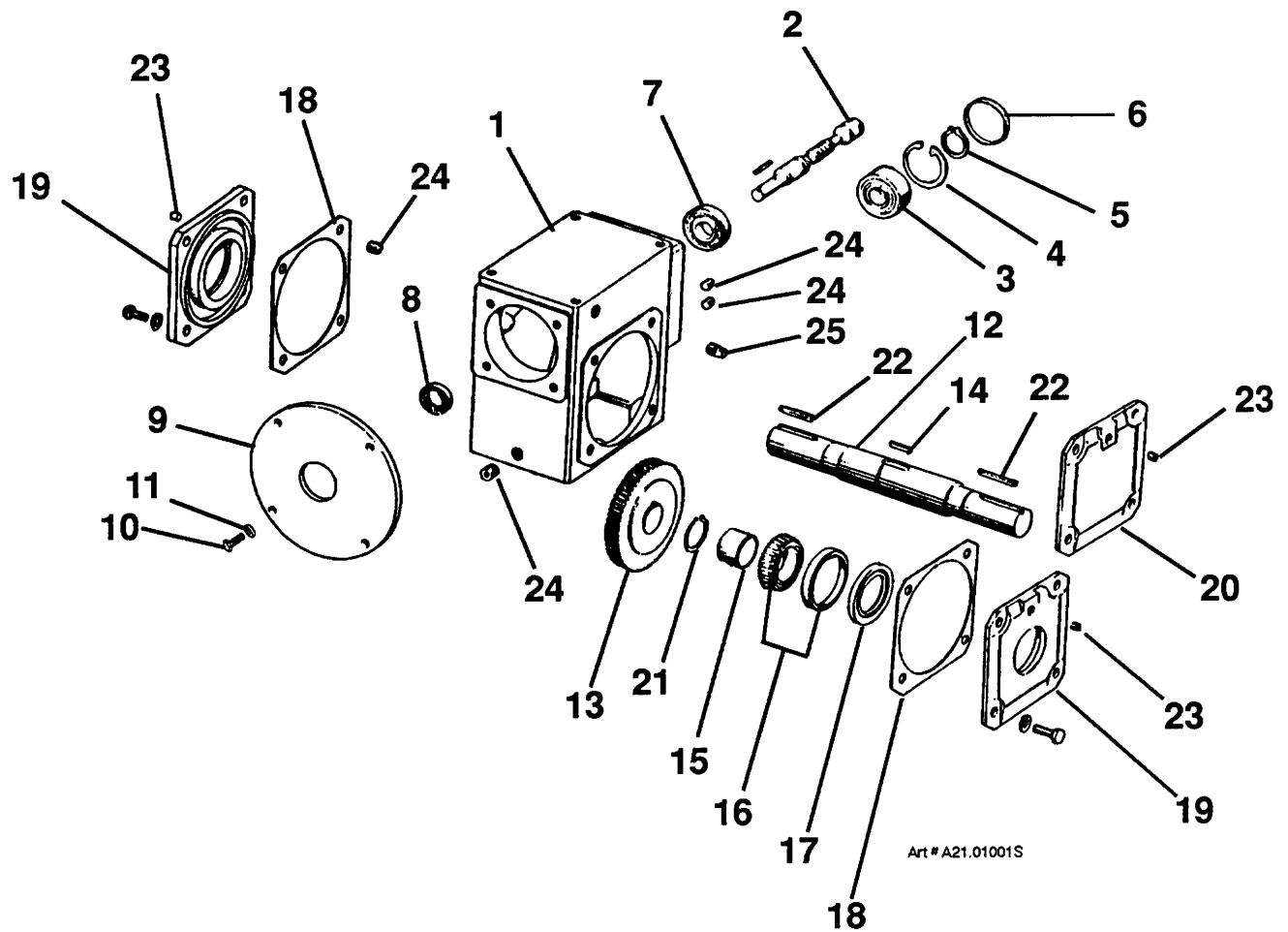
20.03

PARTS LIST

ITEM	PART NO	SEE SECTION	DESCRIPTION	QTY.
1	02-012421		HOUSING, PLATFORM ROTATOR	1
2	02-012402		GEAR, WORM	1
3	02-012420		BEARING	1
4	02-012414		RING, LOCK	1
5	02-012405		RING, LOCK	1
6	02-012415		CAP, END	1
7	02-012425		BEARING	1
8	02-012423		SEAL, OIL	1
9	3511510		FLANGE KIT, PLATFORM	1
10	02-012424		CAPSCREW	1
11	02-012422		WASHER, LOCK	1
12	02-012403		SHAFT, OUTPUT	1
13	02-012404		GEAR	1
14	02-012407		KEY	1
15	02-012409		SPACER	1
16	02-012406		BEARING	1
17	02-012410		SEAL, OIL	1
18	02-012417		SHIM [0.007 (.18 mm) thick]	A.R.
	02-012418		SHIM [0.011 (.28 mm) thick]	A.R.
	02-012416		SHIM [0.019 (.48 mm) thick]	A.R.
19	02-012412		SEAL CAGE, REDUCER	2
20	02-012413		COVER, END	
21	02-012408		RING, LOCK	1
22	02-012427		KEY	2
23	02-012411		PIPE PLUG, REDUCER	3
24	02-012419		PIPE PLUG, REDUCER	4
25	02-012428		PLUG, VENT	1

TITLE PLATFORM ROTATOR (40:1 WORM SPEED REDUCER)

PLATE NO. 21.01	SIMON AERIALS INC.	REV. 28 FEB., 1992	PART NO. 02-012400
-----------------	---------------------------	--------------------	--------------------



TITLE PLATFORM ROTATOR (40:1 WORM SPEED REDUCER)

SIMON AERIALS INC.

REV. 28 FEB., 1992

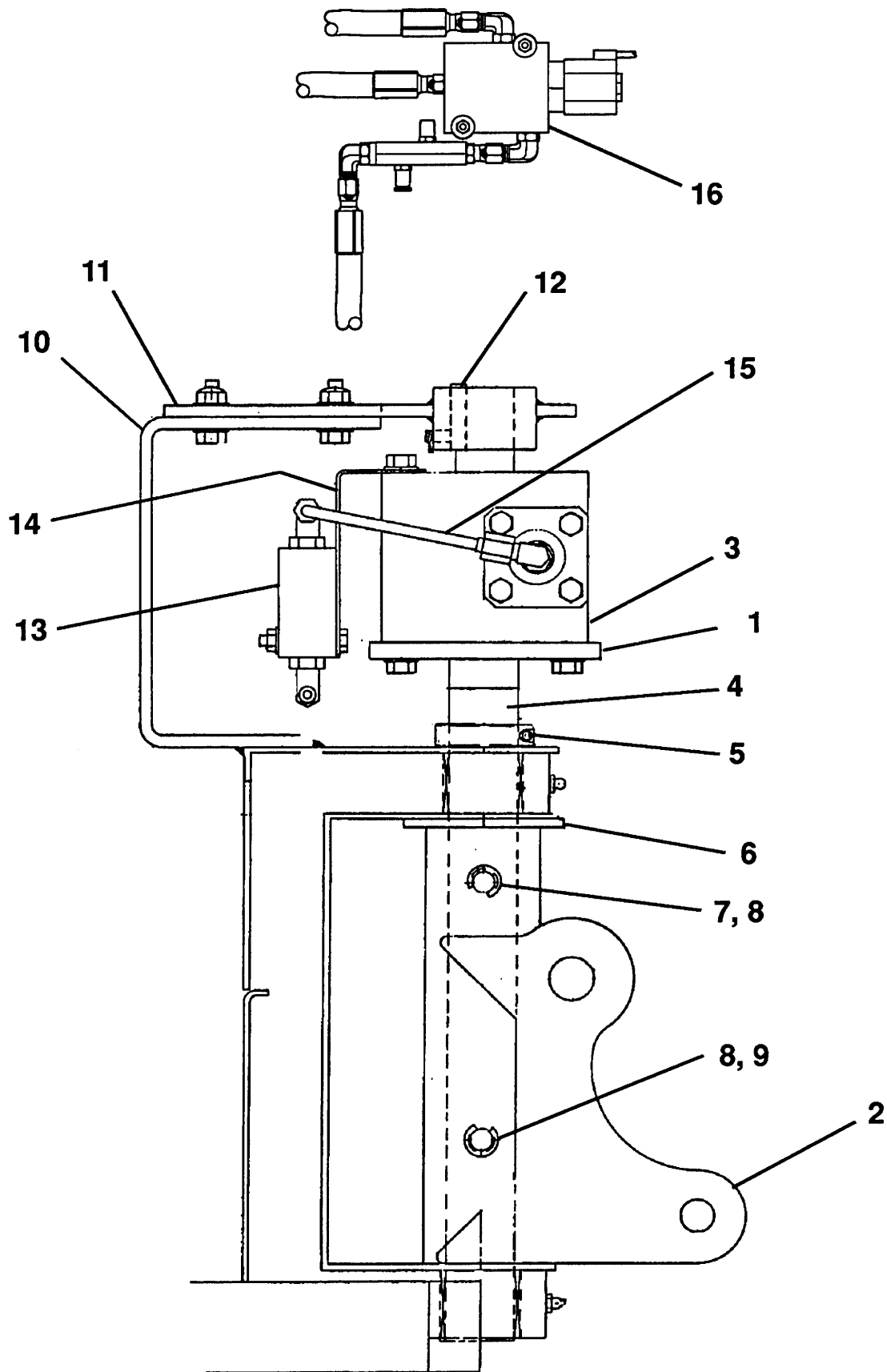
PART NO. 02-012400

PLATE NO. 21.01

PARTS LIST				
ITEM	PART NO	SEE SECTION	DESCRIPTION	QTY.
1	2132120	21.04	CAB PIVOT WELDMENT	1
2	2141340		KNUCKLE WELDMENT	1
3	01-084500		ACTUATOR, ROTARY	1
4	2134810		SPACER	1
5	02-015100		COLLAR, CLAMPING	1
6	08-014100		BEARING, THRUST	1
7	2109830		PIN, UPPER PIVOT POST	1
8	• 08-045300		RING, RETAINING	4
9	2109840		PIN, LOWER PIVOT POST	1
10	2132160		BRACKET, CAB ANCHOR	1
11	2132150		OUTPUT WELDMENT, PLATFORM ROTATE	1
12	2133450		KEY	1
13	01-084700		VALVE, CHECK (Dual pilot operated)	1
14	2133200		PLATE, CHECK VALVE MOUNTING	1
15	2133210		TUBE ASSEMBLY, CHECK VALVE	1
16	01-084800		VALVE, THREE WAY (12 Volt DC, for fuel powered units)	1
	01-087000		VALVE, THREE WAY (48 Volt DC, for electric powered units)	1
TITLE HYDRAULIC ROTATOR				
PLATE NO.	21.03	SIMON AERIALS INC.		PART NO. 2132120 <small>REV. 17 AUG., 1993</small>

HYDRAULIC ROTATOR

2132120



TITLE

HYDRAULIC ROTATOR

SIMON AERIALS INC.

REV. 17 AUG., 1993

PART
NO.

2132120

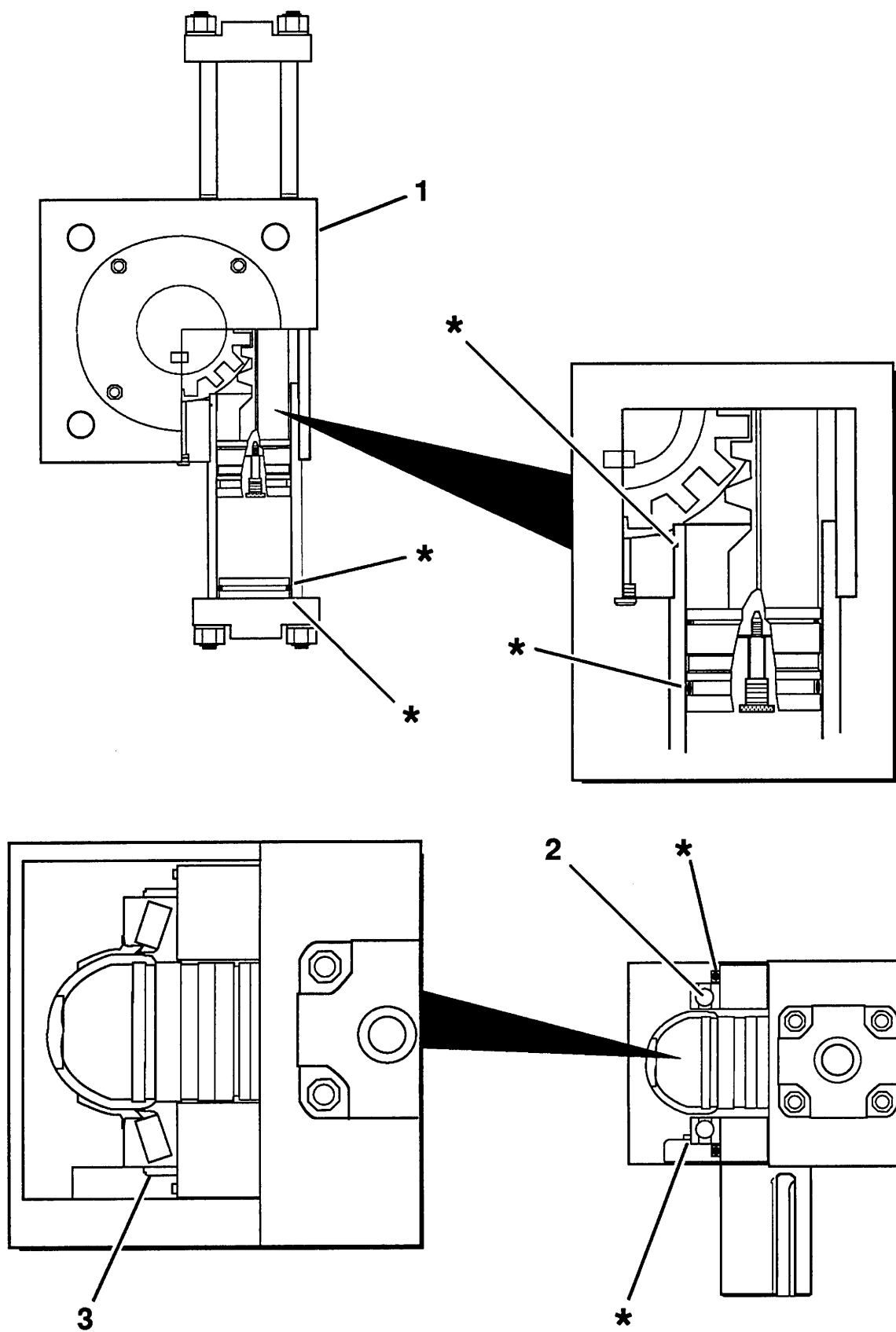
PLATE
NO.

21.03

[illegible]

TITLE		HYDRAULIC ACTUATOR ASSEMBLY	
PLATE NO.	21.04	SIMON AERIALS INC. REV. 28 FEB., 1992	PART NO. 01-084500

TITLE		HYDRAULIC ACTUATOR ASSEMBLY	
PLATE NO.	21.04	SIMON AERIALS INC. REV. 28 FEB., 1992	PART NO. 01-084500



TITLE

HYDRAULIC ACTUATOR ASSEMBLY

SIMON AERIALS INC.

REV. 28 FEB., 1992

PART
NO.

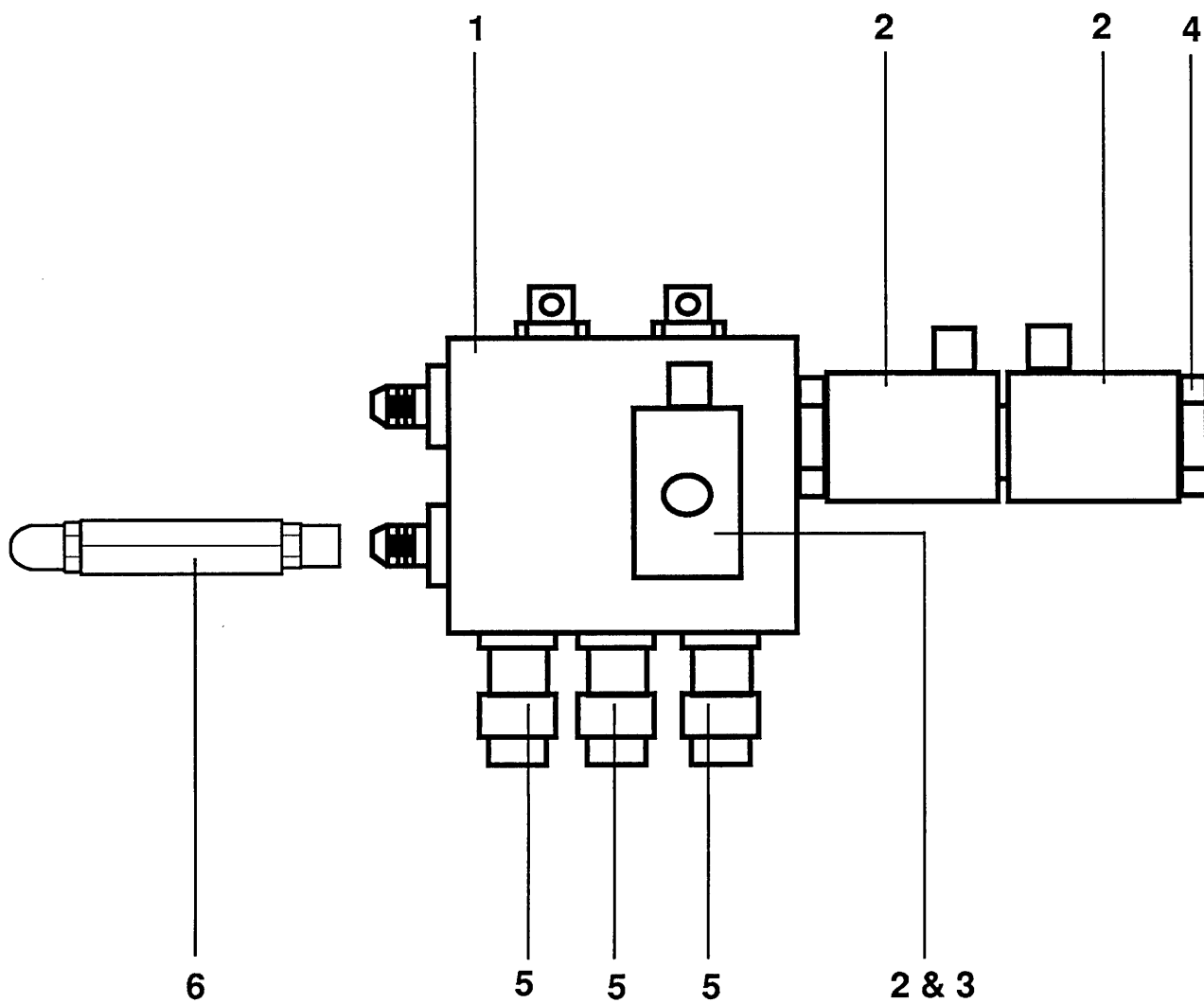
01-084500

PLATE
NO.

21.04

PARTS LIST

ITEM	PART NUMBER	SEC.	DESCRIPTION	QTY.
1	01-087300		BLOCK, VALVE	1
2	01-087400		VALVE, SOLENOID	3
3	01-088900		CARTRIDGE (SINGLE SOLENOID)	1
4	01-089000		CARTRIDGE (DOUBLE SOLENOID)	1
5			CARTRIDGE, RELIEF	3
6	01-020800		VALVE, CHECK	1
DESCRIPTION			VALVE BLOCK	PART NO.



DESCRIPTION

VALVE BLOCK

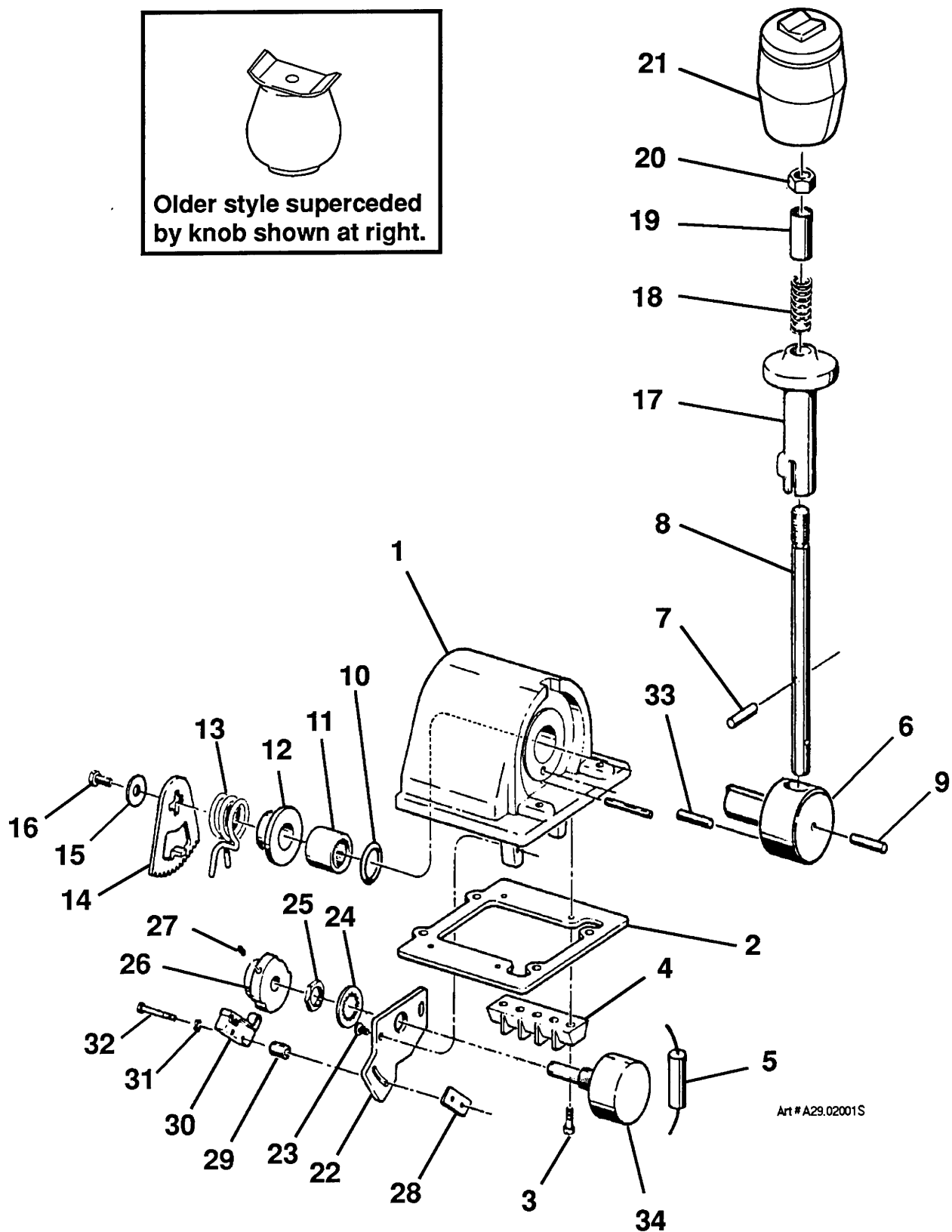
PART NO.

PARTS LIST

ITEM	PART NO	SEE SECTION	DESCRIPTION	QTY.
	3515850		DRIVE CONTROLLER ASSEMBLY (for fuel operated versions. Includes item 34)	1
	3515860		(for electric operated versions. Includes item 34)	1
1	03-426400		DRIVE CONTROLLER (does not include item 34) HOUSING, DRIVE CONTROLLER	1
2	03-027229		GASKET, PANEL	1
3			MACHINE SCREW, FILLISTER HEAD (#6-32 x 1/2")	4
4	03-426406		BLOCK, TERMINAL	2
5	03-061900		DIODE	1
6	03-426405		HANDLE, CONTROL	1
7	03-027218		PIN	1
8			EXTENSION, CONTROL HANDLE	1
9			PIN, GROOVED	1
10			"O"- RING	1
11			BEARING, LOW FRICTION	1
12	03-027233		GUIDE, SPRING	1
13	03-027232		SPRING, TORSION	1
14	03-027234		SECTOR, GEAR	1
15			WASHER, FLAT (SAE)	1
16			MACHINE SCREW, HEX HEAD	1
17	03-027221		SLIDE LOCK, CONTROL HANDLE	1
18	03-027215		SPRING, SLIDE LOCK	1
19	03-027219		SLEEVE, HANDLE	1
20			NUT, HEX	1
21	03-426407		GRIP ASSEMBLY, ROCKER SWITCH	1
22			PLATE, POTENTIOMETER MOUNTING	1
23			MACHINE SCREW, PAN HEAD	2
24			WASHER, LOCK	1
25			NUT, HEX	1
26	03-426404		SPUR GEAR AND CAM	1
27			SET SCREW, HEX SOCKET	1
28			PLATE, FASTENER	1
29			SPACER	2
30	03-037400		SWITCH, ROLLER LEVER (supercedes part #s 03-027217 and 03-426402)	2
31			WASHER, LOCK	2
32			MACHINE SCREW, FILLISTER HEAD	2
33			PIN, GROOVED	1
34	03-432000		POTENTIOMETER (250 Ohm) (for fuel units)	1
	03-451700		POTENTIOMETER (25 K Ohm) (for electric units)	1

TITLE DRIVE CONTROLLER ASSEMBLY (JOY STICK)

PLATE NO. 29.02	SIMON AERIALS INC.	REV. 23 AUG., 1993	PART NO. 03-426400
-----------------	---------------------------	--------------------	--------------------



Art # A29.02001S

TITLE

DRIVE CONTROLLER ASSEMBLY (JOY STICK)

SIMON AERIALS INC.

REV. 23 AUG., 1993

PART
NO.

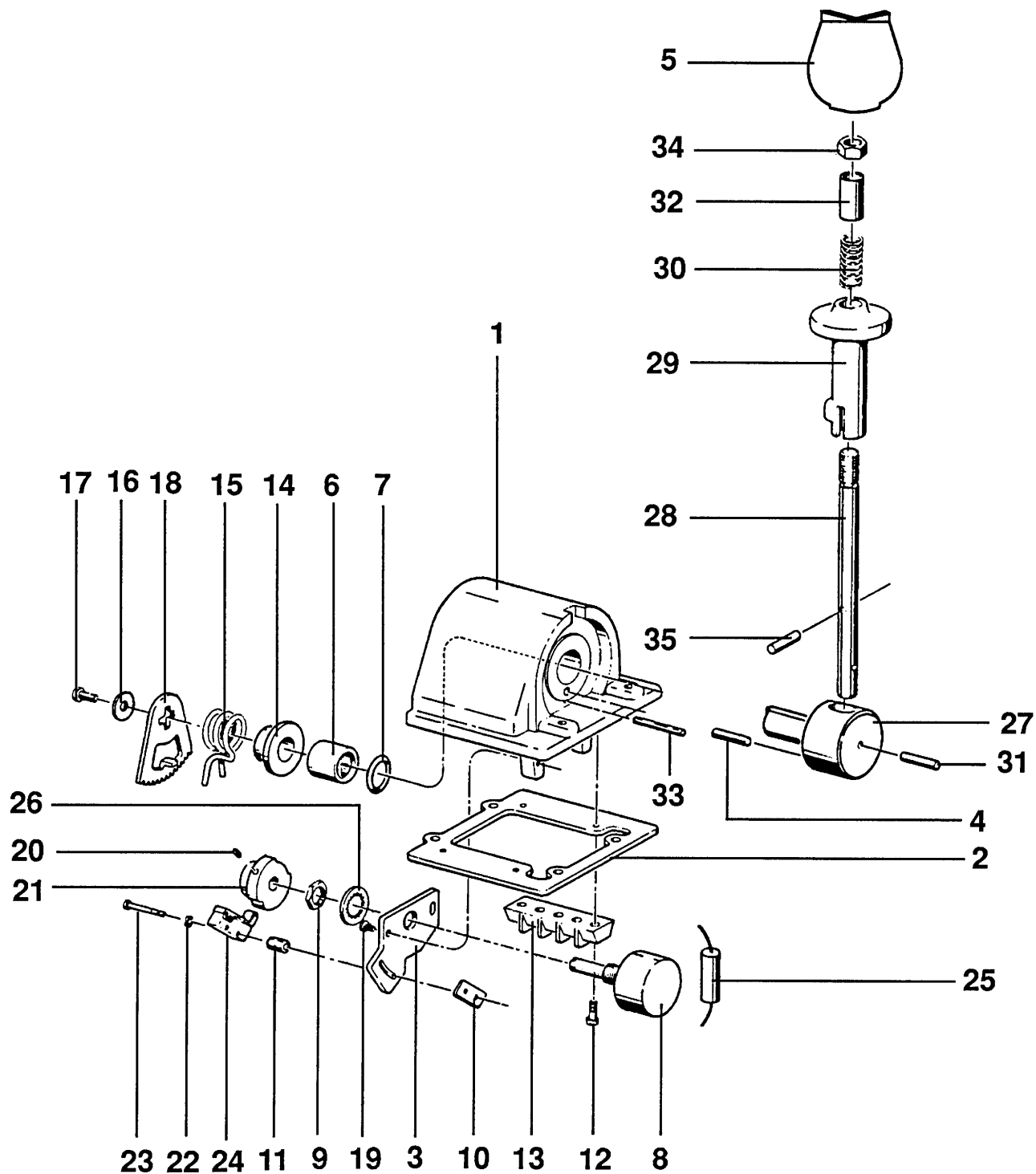
03-426400

PLATE
NO.

29.02

PARTS LIST

ITEM	PART NUMBER	SEC.	DESCRIPTION	QTY.
1	03-451700		HOUSING	1
2			GASKET, PANEL	1
3			PLATE, MOUNTING	1
4			PIN, GROOVED	1
5			KNOB, BALL	1
6			BEARING, LOW FRICTION	1
7			O-RING	1
8			POTENTIOMETER	1
9			NUT, HEX	1
10			PLATE, FASTENER	1
11			SPACER	2
12			SCREW, MACHINE, HEAD, PHILLIPS	4
13			BLOCK, TERMINAL	2
14			GUIDE, SPRING	1
15			SPRING, TORSION	1
16	03-061900		WASHER, FLAT,SAE	1
17			SCREW, MACHINE, HEAD, HEX	1
18			GEAR, SECTOR	
19			SCREW, MACHINE, HEAD, PAN	2
20			SCREW, SET, SOCKET, HEX	1
21			GEAR, SPUR & CAM	1
22			WASHER, LOCK	2
23			SCREW, MACHINE, HEAD, PHILLIPS	2
24			SWITCH, LEVER, ROLLER	2
25			DIODE	1
26			WASHER, LOCK	1
27			HANDLE, CONTROL	1
28			EXTENSION, HANDLE, CONTROL	1
29			LOCK, SLIDE, HANDLE, CONTROL	1
30			SPRING, COMPRESSION, HELICAL	1
31		PIN, GROOVED	1	
32		SLEEVE	1	
DESCRIPTION			PART NO.	
JOYSTICK-DRIVE CONTROLLER (SHEET 1 OF 2)			3515860	



DESCRIPTION

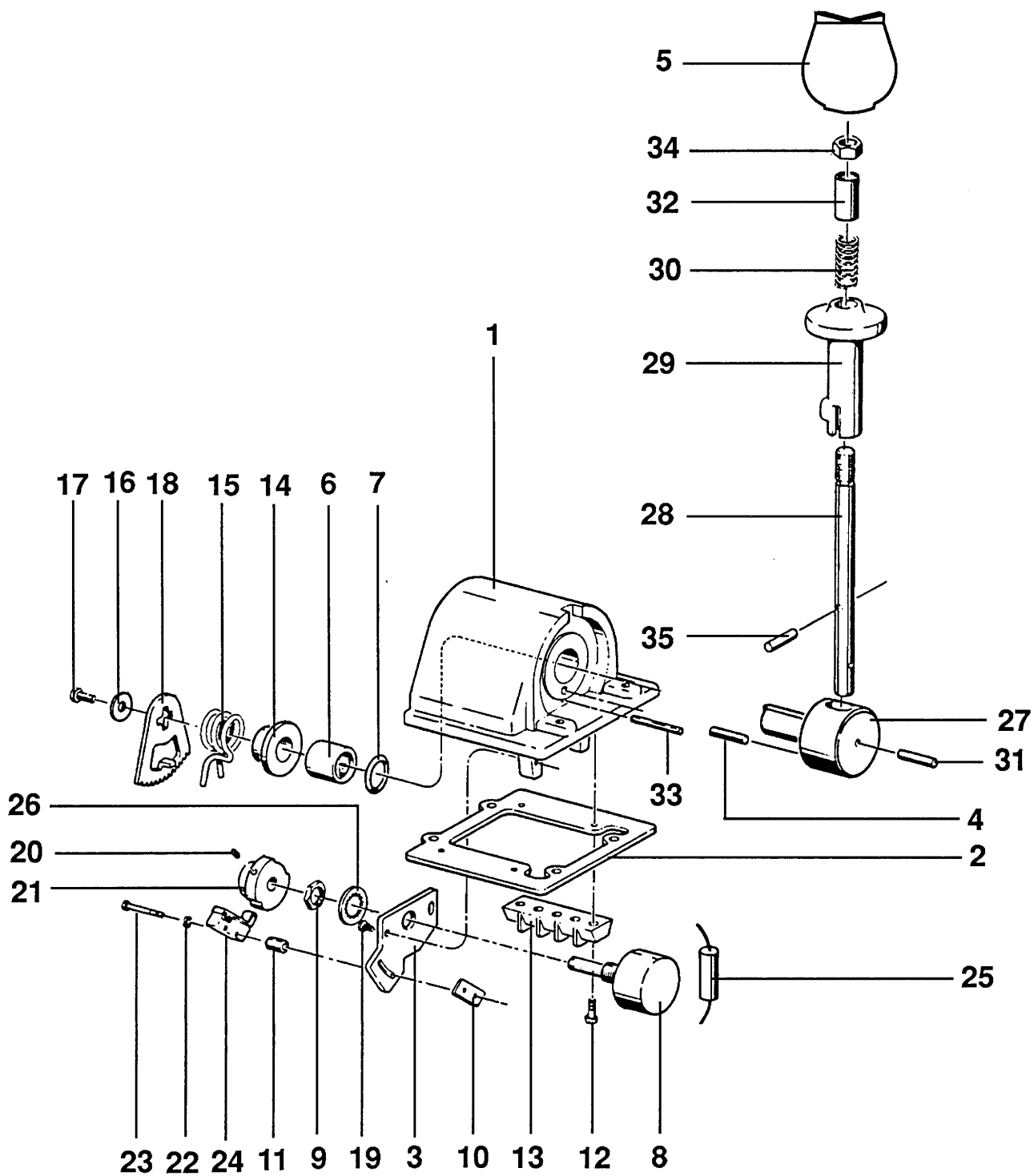
JOYSTICK-DRIVE CONTROLLER (SHEET 1 OF 2)

PART NO.

3515860

PARTS LIST

ITEM	PART NUMBER	SEC.	DESCRIPTION	QTY.
33			PIN	1
34			NUT, HEX	1
35			PIN	1
DESCRIPTION			PART NO.	
JOYSTICK-DRIVE CONTROLLER (SHEET 2 OF 2)			3515860	



DESCRIPTION

JOYSTICK-DRIVE CONTROLLER (SHEET 2 OF 2)

PART NO.

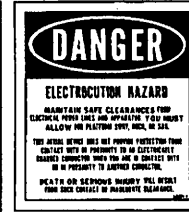
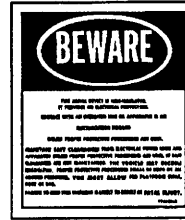
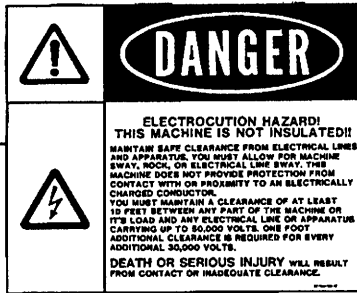
3515860

PARTS LIST

ITEM	PART NUMBER	SEC.	DESCRIPTION	QTY.
1	DKS32/21		KIT, SILVER EAGLE DECAL	1
2	10-007200		DECAL, DISENGAGE LOCK PIN	1
3	10-007600		DECAL, 120 VDC 20 AMP	1
4	10-013400		DECAL, 500 LBS PAYLOAD CAPACITY	1
5	10-017100		DECAL, LARGE SIMON	1
6	10-018900		DECAL, BEWARE POTENTIAL HAZARD	1
7	10-019000		DECAL, DANGER ELECTROCUTION HAZARD	1
8	10-024500		DECAL, 20 AMP CIRCUIT BREAKER	1
9	10-025000		DECAL, PROPANE CLEAN OUT	1
10	10-026800		DECAL, 32/21	2
11	10-084900		DECAL, DANGER ELECTROCUTION HAZARD	2
12	10-087800		DECAL, GAS OUT PROPANE IN	1
13	10-093800		DECAL, SILVER EAGLE	2
14	10-093900		DECAL, LOGO EAGLE	2
15	10-095800		DECAL, OPERATOR INSTRUCTIONS	1
DESCRIPTION			DECALS	PART NO.

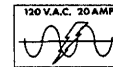
6

11



7

2



3

DISENGAGE LOCKPIN BEFORE
USING THE TURNTABLE

20 AMP. CIRCUIT
BREAKER

8

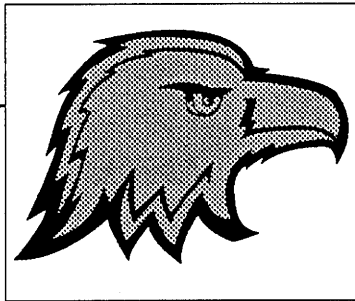
500LBS. (226.4 KG) DO NOT OVERLOAD
MAXIMUM PAYLOAD CAPACITY

4

IN SWITCHING FROM GAS TO L.P.G.
FIRST CLEAN OUT THE FUEL BY
RUNNING THE ENGINE WITH THE
TOGGLE SWITCH IN THE OFF POSITION

12

14



32 / 21

10

5

SIMON

13

SILVER - EAGLE

15

OPERATING INSTRUCTIONS

SIMON-REARIALS INC.

- PRESS AND HOLD FOOT SWITCH DOWN.
- TO OPERATE ANY FUNCTION, SLOWLY MOVE THE CONTROL LEVER IN THE DESIRED DIRECTION.
- TO STOP ANY FUNCTION, SLOWLY RETURN THE CONTROL LEVER TO ITS CENTERED POSITION.
- THEN RELEASE FOOT SWITCH.
- DRIVE- IF THE ENGINE LUGS DOWN, BACK OFF ON THE DRIVE CONTROLLER (REDUCE SPEED).
- STARTER INTERLOCK- THE OPERATOR IS ALLOWED 6.4 SECONDS CRANKING TIME, IF THE ENGINE IS NOT STARTED IN THIS PERIOD THE IGNITION MUST BE TURNED OFF TO OBTAIN ANOTHER CRANKING INTERVAL.

15-000000

DESCRIPTION

DECALS

PART NO.